

PARTS LIST

TFMX-C ***(SINGLE HEAD)***

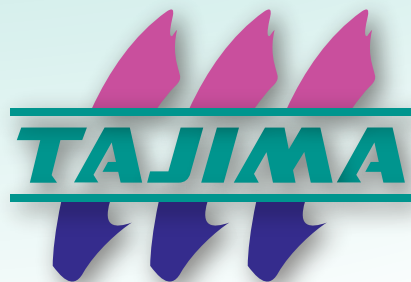


Table of Contents

● GENERAL VIEW	
● FRAMING.....	MG-1
● MAIN SHAFT DRIVE SYSTEM.....	MG-2
● CYLINDER BED 1.....	MG-3-1
● CYLINDER BED 2.....	MG-3-2
● COLOR CHANGE SYSTEM.....	MG-4
● ARM 1.....	MG-5-1
● ARM 2.....	MG-5-2
● ARM 3.....	MG-5-3
● NEEDLE BAR CASE 1.....	MG-6-1
● NEEDLE BAR CASE 2.....	MG-6-2
● UPPER THREAD HOLDER.....	MG-7
● X-AXIS DRIVE SYSTEM.....	MG-8
● Y-AXIS DRIVE SYSTEM.....	MG-9
● TENSION BASE.....	MG-10
● THREAD STAND.....	MG-11
● OPERATION PANEL.....	MG-12
● ELECTRICAL PARTS.....	MG-13
● LED LIGHTING.....	MG-14
● SIGNAL TOWER (OPTION).....	MG-15

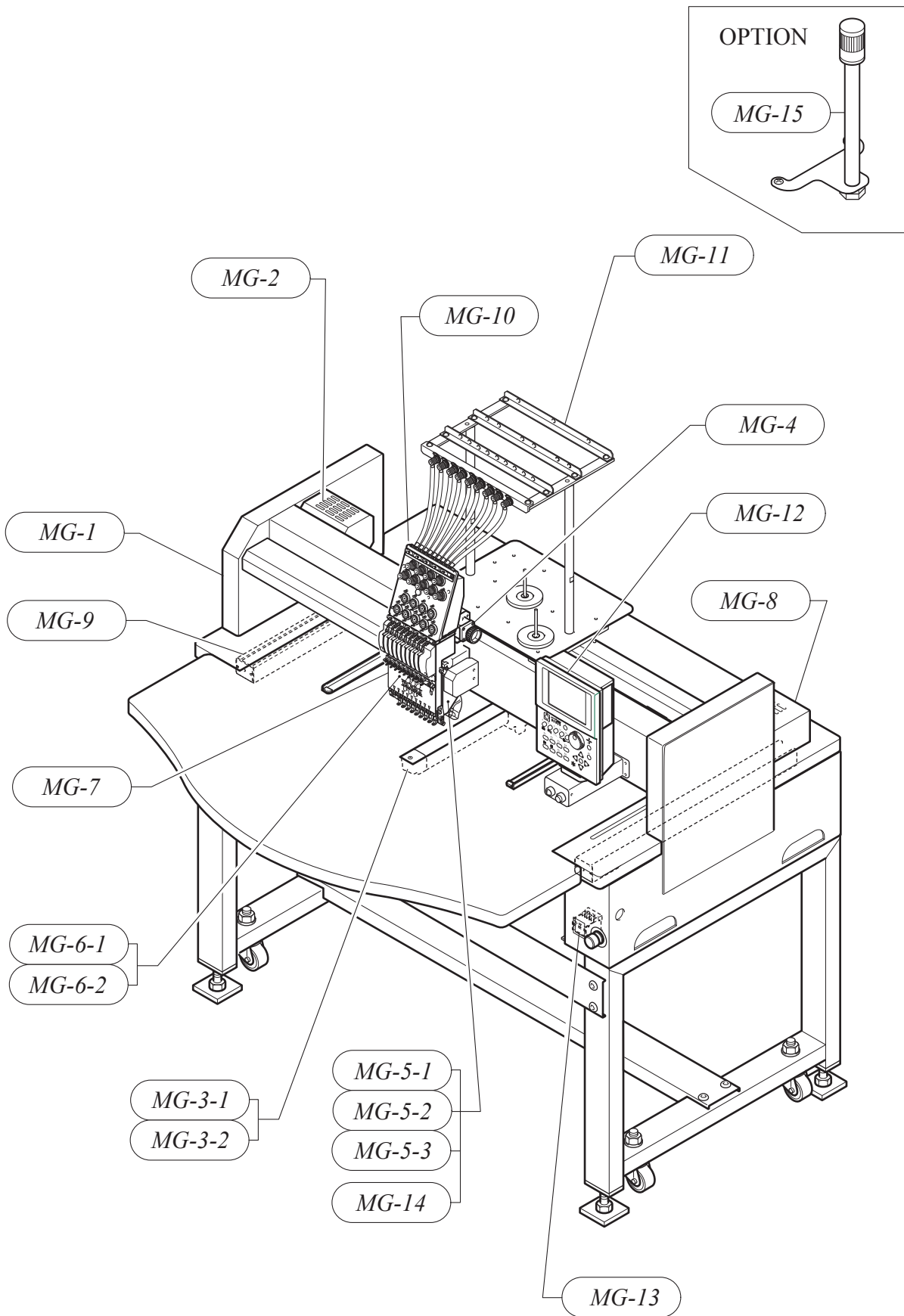
Part Nos. of screws, nuts, washers etc. are listed at the end of volume.

*Regarding the part number that contains description of @, the part differs depending on model, spec. etc.

*When you place an order of such a part, please also inform us of your model, embroidery space and manufacturing number of the machine.

Ex.	TFMX-C901	450×520S	No.01234
	[Model]	[Emb. Space]	[Mfg. No.]

GENERAL VIEW



FRAMING

MG-1

No.	Part Name	Part No.	Remark
1	STAND :0001/045*520S[A]	MS7101010A20	
2	BRACKET :BREAKER	030130150000	
3	GROMMET WITH FILM :26A	644500210000	
4	COVER :RIGHT-SIDE BOX	030440300010	
5	COVER :LEFT-SIDE BOX	030440310000	
6	COVER :STAND :L	03044032L000	
7	COVER :STAND :R	03044032R000	
8	BRACKET :TABLE	030610190000	
9	COVER :DC POWER SUPPLY	0J5100900000	
10	REGULAR TRIM :125MM	617300040000	
11	STUD :NO.1 :M3-70	505103050010	
12	MAIN NAME PLATE :TFMX-C	14S70@@@0010	
13	TABLE :0001/045*520S	2S7100010010	
14	HOLDER HARNESS :A	03014003A010	
15	TABLE HOLDER	030610010010	
16	STOPPER :TABLE	030620030020	
17	STAY :WIRING	0F4160360010	
18	BUSHING :HARNESS	0J1501100010	
19	LID :HANDLE	0L2210010000	
20	PLATE SPRING :T1.5	507815010000	
21	COVER :HANDLE :FRONT	030440100010	
22	COVER :HANDLE :REAR L	03044011L000	
23	COVER :HANDLE :REAR R	03044011R000	
24	PLATE SPRING :T1.5 :L	507815020000	
25	PLATE SPRING :T1.5 :R	507815030000	
26	BRACKET :TABLE :B	030610160010	
27	TRAVERSE SCALE	0P1200020000	
28	VIBRATION-PREVENTIVE RUBBER	030520020000	
29	TRUSS HEAD TAPPING SCREW :4P*16	S530041601SD	
30	TRUSS HEAD TAPPING SCREW :4P*20	S530042001SD	
31	ADJUSTER :55MM DIA.	614300220000	
32	DAMPER RING :4MM DIA.	080320410000	
33	BASE :STAND	0L311001@020	
34	JOINT :STAND BASE	0L3110030000	
35	CASTER :SAR65M	614300140000	
36	LEVELING BOLT :M12*50	030530040000	
37	VIBRATION-PREVENTIVE BASE[S]	03052004@S00	
38			
39			
40			
41			
42			
43			
44			
45			
46			
47			
48			
49			
50			

Note: As for parts with mark @, please follow our instructions on Table of Contents in your parts order.

(QS05)

MAIN SHAFT DRIVE SYSTEM

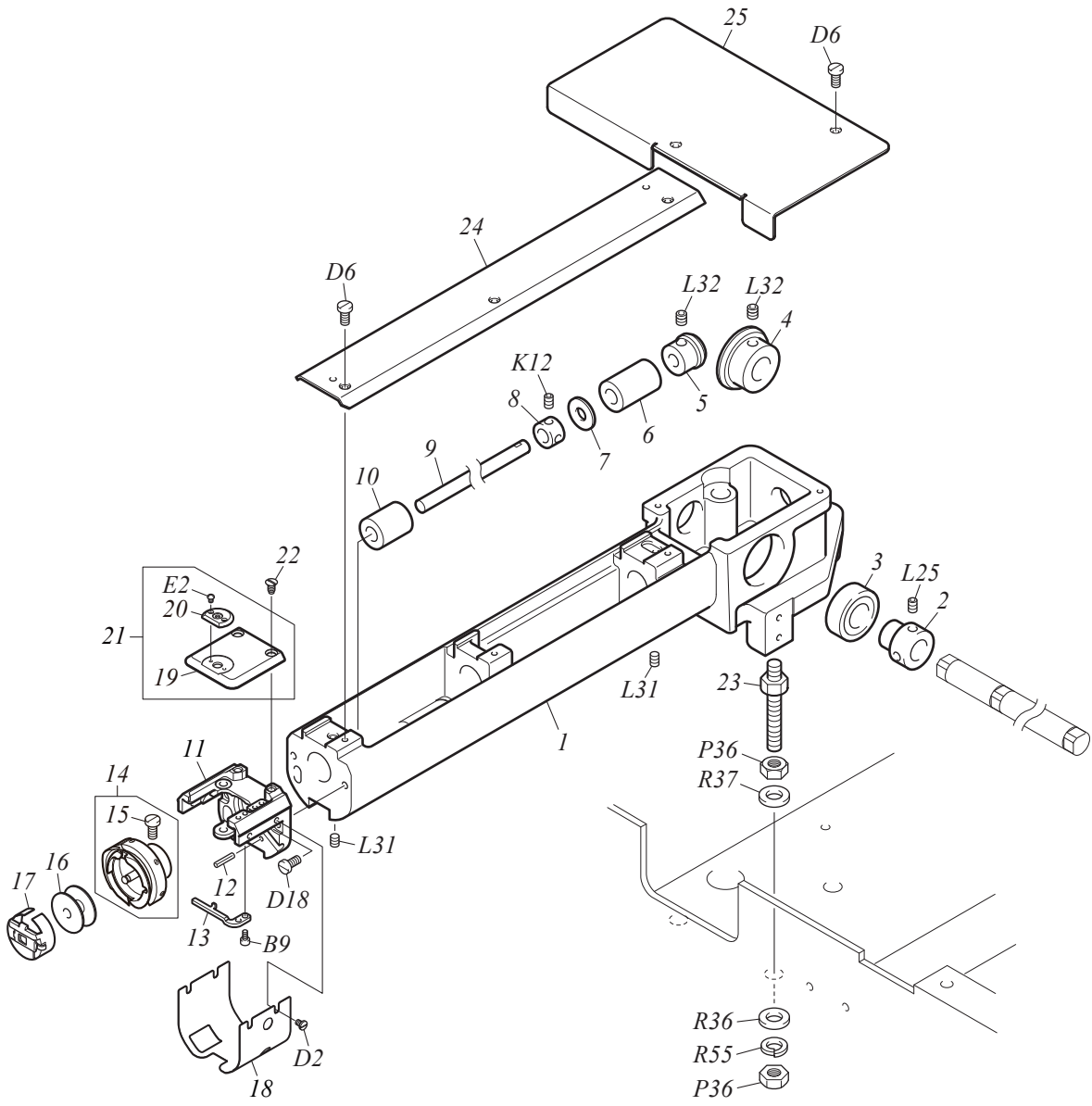
MG-2

No.	Part Name	Part No.	Remark
1	SERVO MOTOR :200W	0J6300800000	
2	COVER :MAIN MOTOR	030150170000	
3	TIMING PULLEY :MAIN SHAFT :W15-16	501430150000	
4	FLAT PULLEY :40MM DIA.	501901010030	
5	BEARING :6000ZZ	630200050000	
6	SCREW WITH ROLLER PIN :NO.3 :M8	514308050000	
7	E-RING :7MM DIA.	611100100000	
8	TIMING BELT :S5MN :W15-1125/G	623200240000	
9	TIMING PULLEY :B :W15-40	50143303B000	
10	BEARING COLLAR :15MM DIA.	502715040010	
11	BEARING CASE :NO.2 :20MM DIA.[S]	508220060S00	
12	BASE :ANGLE INDICATOR	040420210010	
13	ANGLE INDICATOR	040420230010	
14	BEARING CASE :NO.2 :22MM DIA.[S]	508222020S00	
15	BEARING COLLAR :18MM DIA.	502718010010	
16	TIMING PULLEY :A :W15-40	50143303A000	
17	BEARING CASE :LOWER SHAFT/REGULAR ROTARY HOOK[S]	040140010S00	
17	BEARING CASE :LOWER SHAFT/JUMBO ROTARY HOOK[S]	04014001JS00	
18	CLAMP :5N	644500050000	
19	BRACKET :COVER	030460050010	
20	SHAFT COVER	17018001@000	
21	BASE :SENSOR :WITHOUT SPACER	040360040010	
22	BRACKET :SHAFT COVER :B	030460130010	
23	BRACKET :SENSOR	040360020010	
24	CARD :PHOTO-INTERRUPTER	0J4201600020	
25	R. H. BASE CONNECTING SHAFT :15P*558	QS7102020000	
26	MAIN SHAFT :18P*682	QS7101010000	
27	ROTATING DETECTING PLATE[S]	040360050S10	
28	POINTER	040410070010	
29	COVER :TIGHTENING COLLAR	170110080000	
30	TIMING BELT :SPTG :W15-S3M0207/G	621300020010	Regular Rotary Hook
30	TIMING BELT :SPTG :W15-S3M0201/G	621300010010	Jumbo Rotary Hook
31	BEARING COLLAR :15MM DIA.	502715080000	
32	TIMING PULLEY :W15-30[S]	501237010S00	
33	R. H. BASE CONNECTING SHAFT :15P*179	QS7102010000	
34			
35			
36			
37			
38			
39			
40			
41			
42			
43			
44			
45			
46			
47			
48			

Note: As for parts with mark @, please follow our instructions on Table of Contents in your parts order.

(QS12)

CYLINDER BED 1



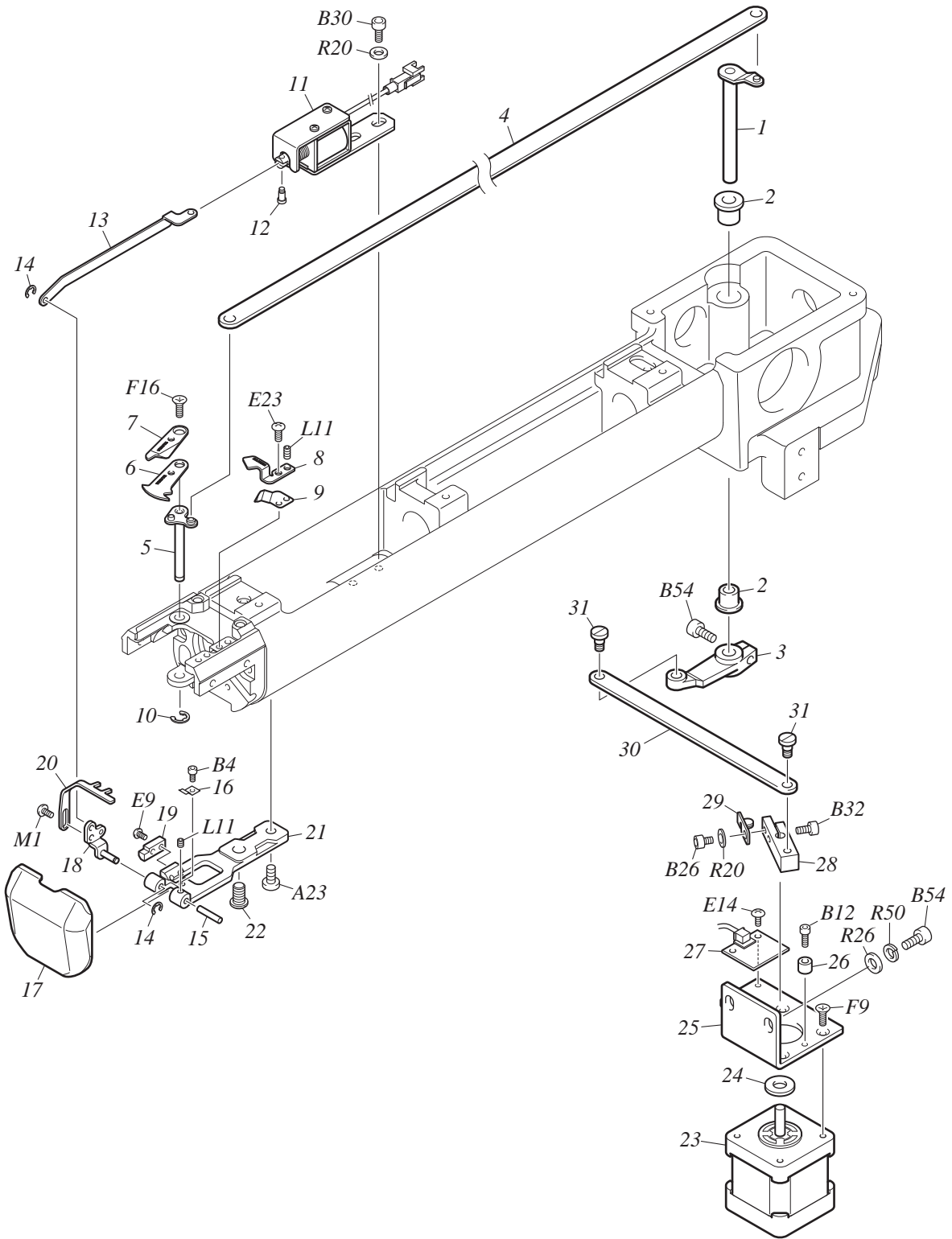
CYLINDER BED 1

MG-3-1

No.	Part Name	Part No.	Remark
1	CYLINDER BED :NO.1 :REGULAR ROTARY HOOK	05012001A000	
1	CYLINDER BED :NO.1 :JUMBO ROTARY HOOK	05012002A000	
2	BEARING COLLAR :15MM DIA.	502715080000	
3	BEARING :6003ZZ	630200080000	
4	SPIRAL BEVEL GEAR :NO.1 :28T	506528030000	
5	SPIRAL BEVEL GEAR :NO.1 :14T	506514030000	
6	OIL-BUSHING :NO.1 :7.94MM DIA.	509179090010	
7	PLAIN WASHER :7.94*19*T0.8	519108030000	
8	STOPPER COLLAR :7.94MM DIA.	502107020000	
9	SHAFT :ROTARY HOOK :7.94MM DIA.	050330430000	
10	OIL-BUSHING :NO.1 :7.94MM DIA.	509179020000	
11	NEEDLE PLATE BRACKET	050330580000	
12	SPRING PIN :3*12	611400080000	
13	ROTARY HOOK SUPPORT	050330600000	
14	ROTARY HOOK :REGULAR ROTARY HOOK HSL-ATR (MTQETA)	050210140010	
14	ROTARY HOOK :JUMBO ROTARY HOOK KHS20-RYPOET2	05022005J010	
15	ROTARY HOOK SET SCREW :11/64*7.2	050290020000	
16	BOBBIN :REGULAR ROTARY HOOK	050260010020	
16	BOBBIN :HSM ALUMINUM FULL HARD ALUMITE	05027002J000	Jumbo Rotary Hook
17	BOBBIN CASE :REGULAR ROTARY HOOK :STANDARD	050240150000	
17	BOBBIN CASE :JUMBO ROTARY HOOK :STANDARD	05025001J000	
18	COVER :NEEDLE PLATE BRACKET	050330590000	
19	NEEDLE PLATE :COMMON USE	050340500000	
20	BOSS :COMMON USE NEEDLE PLATE	05034051@010	
21	NEEDLE PLATE :CAP/NORMAL/TUBULAR[A]	05034050@A10	
22	ROUND COUNTERSUNK HEAD SCREW :11/64*8.4B	511554010000	
23	ROTARY HOOK BASE STUD	050310110000	
24	COVER :CYLINDER BED :FRONT	050330450020	
25	COVER :CYLINDER BED :REAR	050330490000	
26			
27			
28			
29			
30			
31			
32			
33			
34			
35			
36			
37			
38			
39			
40			
41			
42			
43			
44			
45			
46			

Note: As for parts with mark @, please follow our instructions on Table of Contents in your parts order.

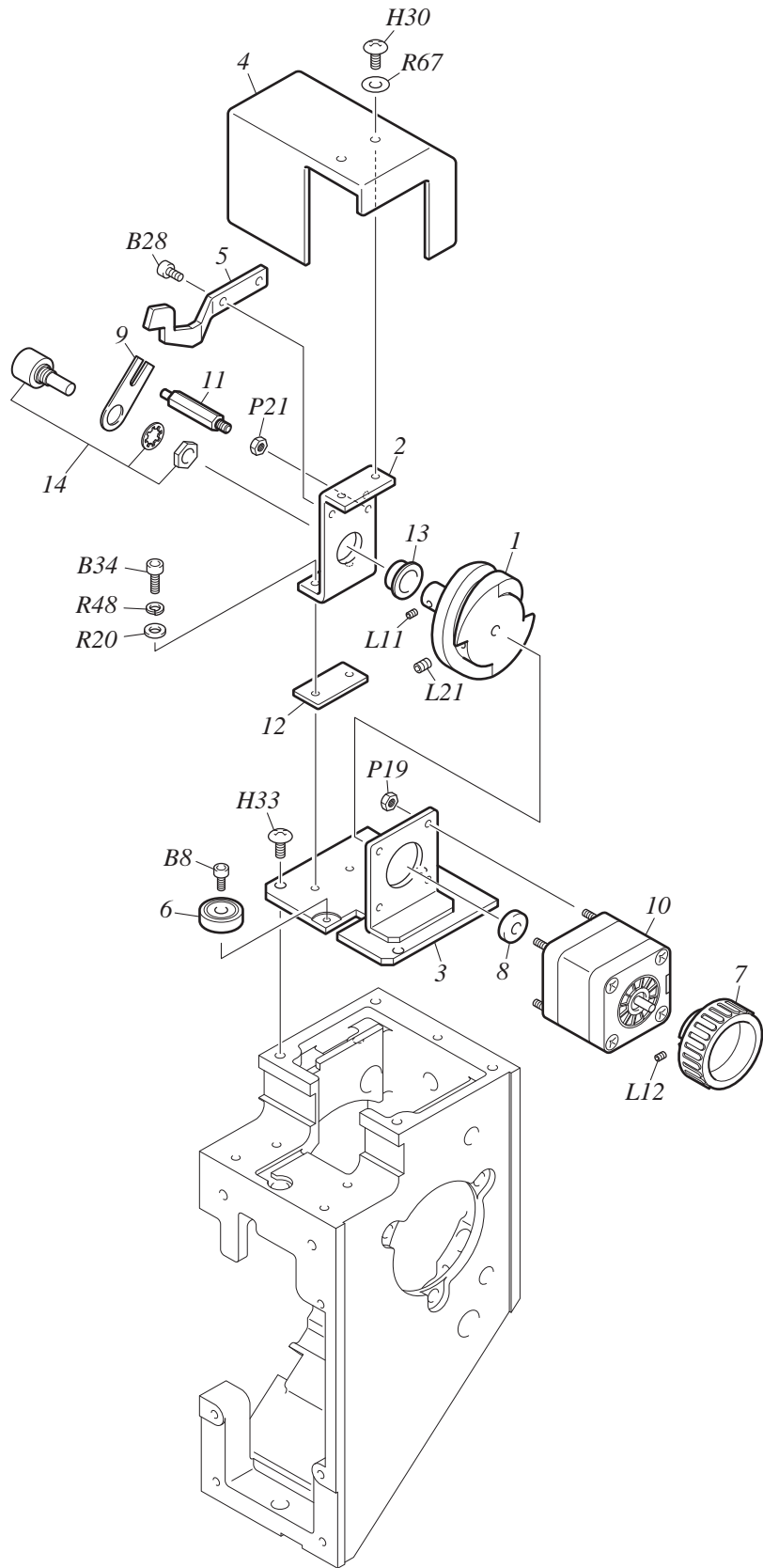
(QS12)



CYLINDER BED 2

MG-3-2

No.	Part Name	Part No.	Remark
1	LEVER SHAFT :KNIFE CONNECTING PLATE[S]	050320850S20	
2	OIL-BUSHING :NO.1 :F81212162	638100370000	
3	LEVER :KNIFE CONNECTING PLATE SHAFT	050321000000	
4	CONNECTING PLATE :KNIFE	050320800010	
5	LEVER SHAFT :KNIFE[S]	050320040S30	
6	THREAD SEPARATING PLATE :DIRECT MOVEMENT 2-BLADE TYPE	050320930000	
7	MOVABLE KNIFE :DIRECT MOVEMENT 2-BLADE TYPE	050320920000	
8	FIXED KNIFE :DIRECT MOVEMENT 2-BLADE TYPE	050320940000	
9	UNDER THREAD PRESSER	050320740000	
10	E-RING :4MM DIA.	611100070000	
11	SOLENOID :OPEN FRAME[A]	0J6600100A00	
12	STEPPED SCREW :NO.1 :M2.5*6	512130010010	
13	CONNECTING PLATE :PICKER	050320570010	
14	E-RING :2MM DIA.	611100050000	
15	STRAIGHT PIN :NO.1 :3MM DIA.	503101100000	
16	PLATE SPRING :ROTARY HOOK COVER :T0.2	507802050000	
17	ROTARY HOOK COVER[S]	050330610S00	
18	SHAFT :PICKER	050320750050	
19	STOPPER :PICKER	050320700000	
20	PICKER	050320760020	
21	HOLDER :PICKER SHAFT	050320840010	
22	FLAT FILLISTER HEAD SCREW :M6*10	511106010010	
23	PULSE MOTOR :42MM SQUARE :DOUBLE-END	0J6106200000	
24	PLASTIC WASHER :6*15*T2.5	519206020000	
25	BASE :ATH MOTOR	050321020000	
26	DAMPER RING :3MM DIA. E	050320470010	
27	CARD :MAGNETIC SENSOR A	0J4204400000	
28	LEVER :ATH	050320100000	
29	SENSOR PLATE :NO.1	050320110000	
30	CONNECTING PLATE :ATH DRIVE ARM	050320430000	
31	STEPPED SCREW :NO.1 :M4*6.7	512104100040	
32			
33			
34			
35			
36			
37			
38			
39			
40			
41			
42			
43			
44			
45			
46			
47			
48			
49			
50			



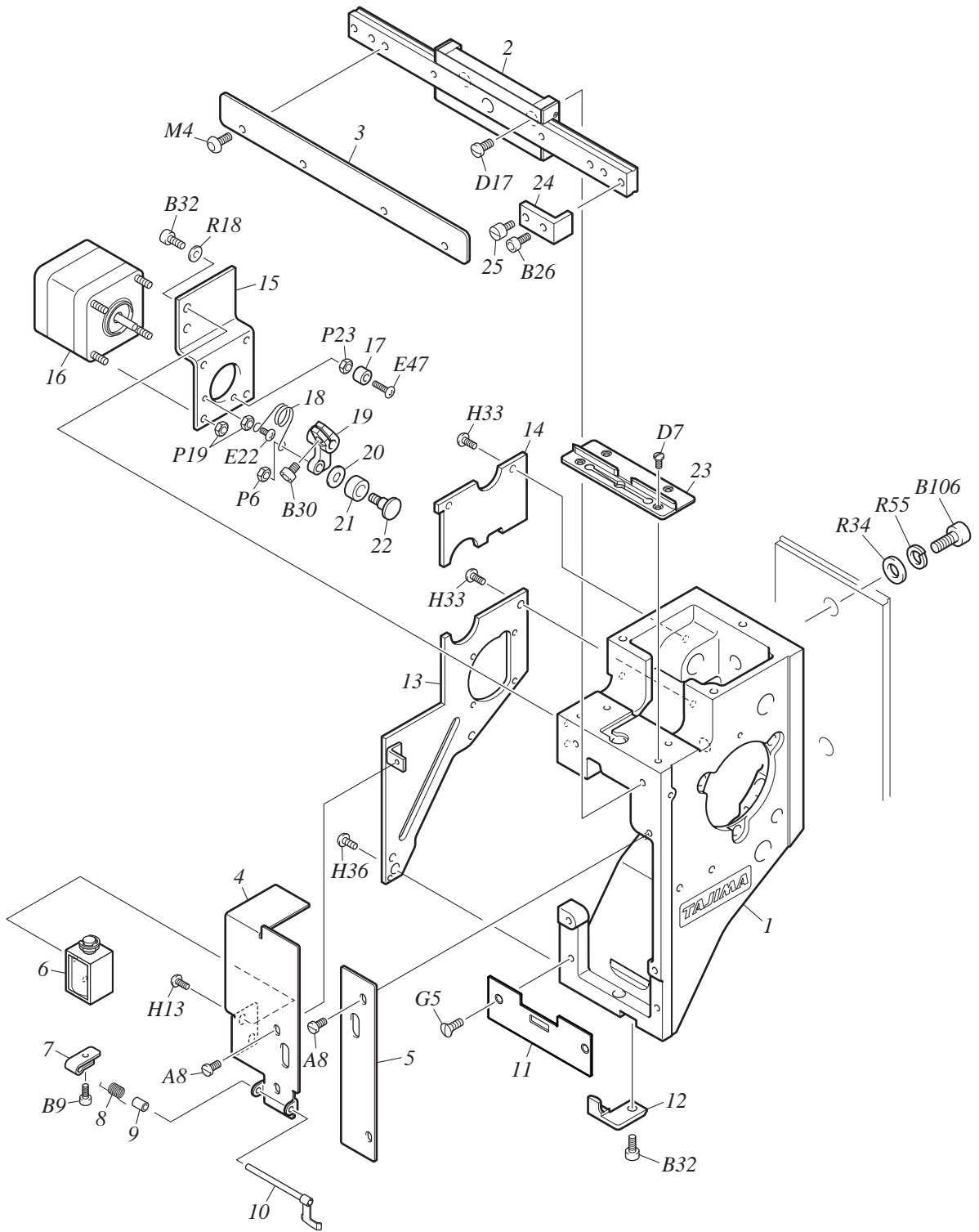
COLOR CHANGE SYSTEM

MG-4

No.	Part Name	Part No.	Remark
1	CAM :CHANGE	070110030000	
2	BEARING CASE :CHANGE CAM	070110370000	
3	BASE :CHANGE MOTOR	070110340010	
4	COVER :CHANGE	070110350010	
5	SENSOR ARM	0C0230210000	
6	ROLLER PIN[S]	080290040S10	
7	KNOB :B	08052001B010	
8	COLLAR :NO.1 :5.1MM DIA.	502551010000	
9	BRACKET :POTENTIOMETER	0C0420020010	
10	PULSE MOTOR :42MM SQUARE :DOUBLE-END[T]	0J6110700T00	
11	STUD :NO.4 :M4-27.5	505404030020	
12	SPACER :NO.2 :T3	510200390010	
13	OIL-BUSHING :NO.2 :MB0206-20FDU	638100240000	
14	POTENTIOMETER	640900010001	
15			
16			
17			
18			
19			
20			
21			
22			
23			
24			
25			
26			
27			
28			
29			
30			
31			
32			
33			
34			
35			
36			
37			
38			
39			
40			
41			
42			
43			
44			
45			
46			
47			
48			
49			
50			

Note: As for parts with mark @, please follow our instructions on Table of Contents in your parts order.

(RR02)



ARM 1

MG-5-1

No.	Part Name	Part No.	Remark
1	HEAD	080120010030	
2	LINEAR WAY :NEEDLE BAR CASE	08025004@000	6 to 15-Needle
3	REINFORCING PLATE	08025005@000	12, 15-Needle
4	HEAD FRONT COVER :L	08042002L010	
5	HEAD FRONT COVER :R	08042002R000	
6	SOLENOID :OPEN FRAME	640600121001	
7	LEVER :SOLENOID	080270010000	
8	TORSION SPRING :0.5MM DIA.	507305020020	
9	COLLAR :NO.1 :3.1MM DIA.	502505010000	
10	LEVER :DRIVE[S]	080270040S10	
11	GUIDE PLATE :NEEDLE BAR CASE	080250020000	
12	GUIDE BRACKET :NEEDLE BAR CASE	080250030010	
13	SIDE COVER :HEAD :LOWER	080430220000	
14	SIDE COVER :HEAD :UPPER	080430010000	
15	BRACKET :JUMP MOTOR	080320490000	
16	PULSE MOTOR :42MM SQUARE :DOUBLE-END[T]	0J6110700T00	
17	DAMPER RING :4MM DIA.	080320410000	
18	TORSION SPRING :0.9MM DIA.	507309040020	
19	LEVER :JUMP	080320420010	
20	WASHER :4.8*8*T0.8	S301040801KC	
21	ROLLER :4.7MM DIA.	515110010010	
22	STEPPED SCREW :NO.1 :11/64*8.2	512154010010	
23	TAKE-UP LEVER GUIDE RAIL	080280070000	
24	STOPPER :LINEAR WAY	080260120000	
25	FLAT FILLISTER HEAD SCREW :M4*10	511104010010	
26			
27			
28			
29			
30			
31			
32			
33			
34			
35			
36			
37			
38			
39			
40			
41			
42			
43			
44			
45			
46			
47			
48			
49			
50			

Note: As for parts with mark @, please follow our instructions on Table of Contents in your parts order.

(RR01)

ARM 2

MG-5-2

No.	Part Name	Part No.	Remark
1	NEEDLE BAR RECIPROCATOR :GN[A]	080210360A50	
2	TORSION SPRING :0.7MM DIA.	507307010010	
3	HOLDER :JUMP SPRING	080210110010	
4	NEEDLE BAR RECIPROCATOR[S]	080210270S40	
5	PLAIN WASHER :10.3*14*T0.5	519112010000	
6	RECIPROCATING SLIDE BLOCK	080210410030	
7	PLASTIC BUSHING :NO.2 :7.24MM DIA.	509472050010	
8	DAMPER BRACKET :NEEDLE BAR RECIPROCATOR	080210090000	
9	SCREW WITH PIN :NO.3 :11/64-7.9[A]	513354060A10	
10	SCREW WITH PIN :NO.3 :11/64-7.9	513354060010	
11	WICK :2.5*1*22	080240120010	
12	PLAIN WASHER :6*9.5*T0.05-0.5	51910604@020	
13	FLAT FILLISTER HEAD SCREW :9/64*4	511153010010	
14	FELT :14MM DIA.	080240060000	t1
15	FELT :14MM DIA.	080240220000	t3
16	PRESSER FOOT RECIPROCATOR :47MM ST[A]	080210420A10	
17	PRESSER FOOT RECIPROCATOR :47MM ST[S]	080210420S10	
18	DAMPER BRACKET :PRESSER FOOT RECIPROCATOR[S]	080210180S20	
19	NEEDLE BAR DRIVE SHAFT :AUTOMATIC LUBRICATION[S]	0L0210030S00	
20	NEEDLE BAR DRIVE SHAFT :AUTOMATIC LUBRICATION	0L0210030000	
21	WICK :3.5P*183	080240020010	
22	FELT :NEEDLE BAR DRIVE SHAFT :B	080240070000	
23	GUIDE :NEEDLE BAR CASE[S]	080250170S10	
24	FELT :NEEDLE BAR DRIVE SHAFT :D	080240170000	
25	STRAIGHT PIN :NO.1 :8MM DIA.	503101130000	
26	LEVER :TAKE-UP LEVER	080230020000	
27	SCREW WITH ROLLER PIN :NO.7 :M4[S]	514704010S10	
28	ARM :TAKE-UP LEVER	080230060000	
29	SCREW WITH PIN :NO.4 :M3-12.5	513403020000	
30	ROLLER :3MM DIA.	515103010020	
31	LID :TAKE-UP LEVER BEARING CASE :13MM DIA.	080290010000	
32	BEARING CASE BUSHING :NO.1 :8MM DIA.	509508080000	
33			
34			
35			
36			
37			
38			
39			
40			
41			
42			
43			
44			
45			
46			
47			
48			
49			
50			

Note: As for parts with mark @, please follow our instructions on Table of Contents in your parts order.

(QS08)

ARM 3

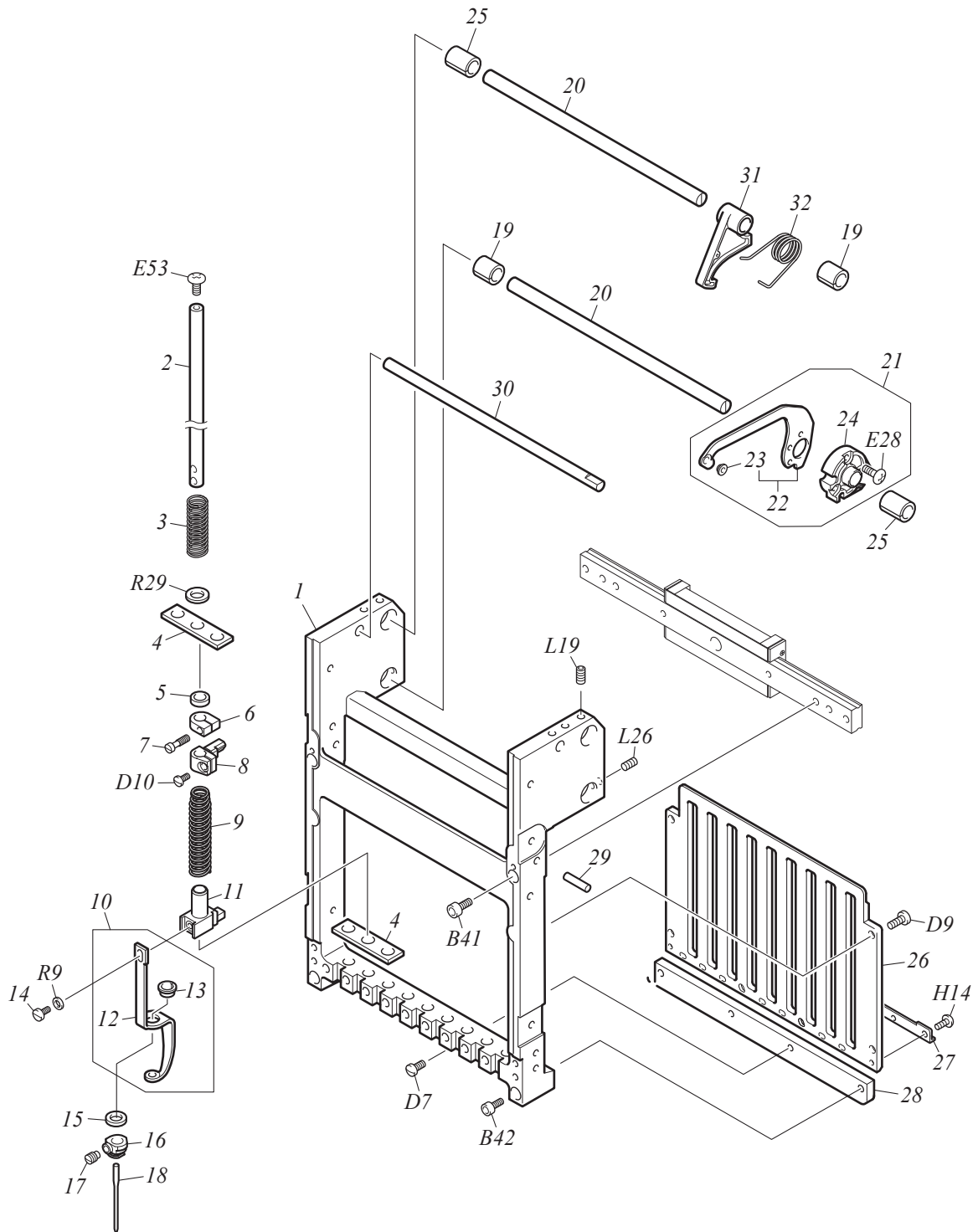
MG-5-3

No.	Part Name	Part No.	Remark
1	TIGHTENING COLLAR :21MM DIA.	502221010010	
2	BEARING CASE :NO.2 :22MM DIA.[S]	508222010S00	
3	BEARING :60/22ZZ	630200040000	
4	CAM :NEEDLE BAR	080220010000	
5	NEEDLE CAGE :KT404310NE01B2	634400070001	
6	CONNECTING ROD :51.7	080220040000	
7	BASE :TAKE-UP LEVER CAM	080220050000	
8	CAM :TAKE-UP LEVER :REGULAR ROTARY HOOK	080220060010	
8	CAM :TAKE-UP LEVER :JUMBO ROTARY HOOK	080220070010	
9	WASHER :CAM	080220180000	
10	COLLAR :NO.1 :21MM DIA.	502521010000	
11	CAM :PRESSER FOOT[A]	080220021A10	
12	LEVER :NEEDLE BAR[S]	080230050S10	
13	STEPPED PIN :NO.4	503204040020	
14	WICK :3.5P*61	080240040010	
15	STOPPER COLLAR :8MM DIA.	502108020010	
16	STEPPED SCREW :NO.2 :M6*21[S]	512206030S10	
17	STEPPED SCREW :NO.2 :M6*21	512206030010	
18	WICK :3.5*1*34	080240140000	
19	CONNECTING ROD	080230210000	
20	SCREW WITH PIN :NO.3 :11/64-7.7	513354050010	
21	WICK :2.5*1*22	080240120010	
22	PLAIN WASHER :8*15*T0.5	519108050000	
23	STEPPED PIN :NO.4	503204030010	
24	STOPPER COLLAR :8MM DIA.	502108050010	
25	CONNECTING ROD :26	080230010000	
26	LEVER :DRIVE :PRESSER FOOT :47	U8K000000000	
27	LEVER :PRESSER FOOT[S]	080230140S50	
28	STEPPED SCREW :NO.1 :M4*3.8	512104160010	
29	ROLLER :5*8*5	515105020010	
30	PLAIN WASHER :4*7.5*T0.8	519104060000	
31	SCREW WITH ROLLER PIN :NO.4 :11/64E[S]	514454010S00	
32	SCREW WITH ROLLER PIN :NO.4 :11/64E	514454010000	
33			
34			
35			
36			
37			
38			
39			
40			
41			
42			
43			
44			
45			
46			
47			
48			
49			

Note: As for parts with mark @, please follow our instructions on Table of Contents in your parts order.

(QS05)

NEEDLE BAR CASE 1



NEEDLE BAR CASE 1

MG-6-1

No.	Part Name	Part No.	Remark
1	NEEDLE BAR CASE	09012001@000	
2	NEEDLE BAR	090410020010	
3	COMPRESSION SPRING :0.5MM DIA.	507605030040	
4	FELT PACKING	090430040000	
5	DAMPER RING :F	090430020010	
6	STOPPER :UPPER DEAD POINT	090420040020	
7	FLAT FILLISTER HEAD SCREW :9/64*12	SA41741201UN	
8	NEEDLE BAR CONNECTING STUD	090420060010	
9	COMPRESSION SPRING :0.9MM DIA.	507609060000	
10	PRESSER FOOT CONNECTING STUD	090420020020	
11	PRESSER FOOT[A]	090460230A00	2mm Dia.
11	PRESSER FOOT[A]	090460070A00	3mm Dia. (Thick Thread)
12	PRESSER FOOT	090460230000	2mm Dia.
12	PRESSER FOOT	090460070000	3mm Dia. (Thick Thread)
13	SPLIT COLLAR :PRESSER FOOT	090460040030	
14	FLAT FILLISTER HEAD SCREW :1/8*44	090470020010	
15	DAMPER RING :A	090430070030	
16	NEEDLE CLAMP[S]	090420010S60	
17	SLOTTED HEAD SET SCREW :11/64*6B	511754010010	
18	NEEDLE :DB-K5Z1 #11	616500080000	
19	SPLIT COLLAR :NO.2 :8MM DIA.	502408020010	
19	SPLIT COLLAR :NO.2 :8MM DIA.	502408010020	15-Needle
20	GUIDE SHAFT :TAKE UP LEVER	09033001@000	
21	TAKE-UP LEVER[A]	090310050A30	
22	TAKE-UP LEVER[S]	090310050S30	
23	THREAD GUIDE COLLAR :2MM DIA.	516503020000	
24	BOSS :TAKE-UP LEVER	090310040010	
25	SPLIT COLLAR :NO.1 :8MM DIA.	502308020010	
25	SPLIT COLLAR :NO.1 :8MM DIA.	502308010010	15-Needle
26	NEEDLE BAR GUIDE	0904500@@010	
27	RAIL GUIDE	08027006@000	
28	RAIL :CASE :LOWER	09044001@010	
28	RAIL :CASE :LOWER :15-NEEDLE	09044002X010	
29	PARALLEL PIN :4*16-H7	611200050000	
30	SPRING HOOK BAR	09033002@000	
31	LEVER :STOPPER	090320010000	
32	TORSION SPRING :1MM DIA.	507310040010	
33			
34			
35			
36			
37			
38			
39			
40			
41			
42			
43			
44			
45			

Note: As for parts with mark @, please follow our instructions on Table of Contents in your parts order.

(QS05)

NEEDLE BAR CASE 2

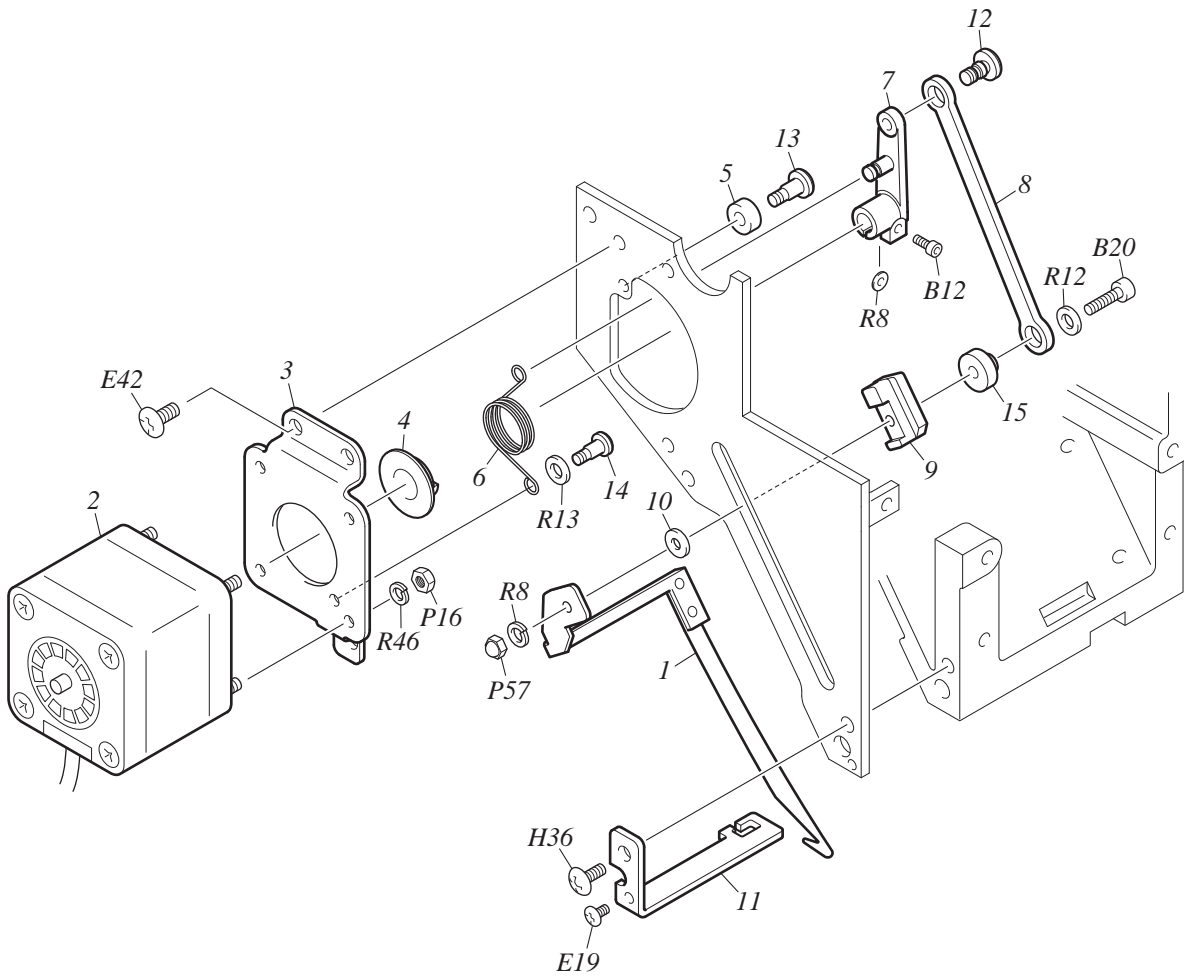
MG-6-2

No.	Part Name	Part No.	Remark
1	TAKE-UP LEVER COVER	09053002@000	
2	PAN HEAD SCREW :9/64*25	511353010000	
3	ROLLER-TYPE MIDDLE THREAD GUIDE[A]	09021025@A00	
4	FLAT FILLISTER HEAD SCREW :M3*4.3	511103010000	
5	BASE :ROLLER-TYPE MIDDLE THREAD GUIDE	09021025@000	
6	ADJUSTING LEVER[S]	090210140S10	
7	COMPRESSION SPRING :0.7MM DIA.	507607160000	
8	RATCHET	090210050020	
9	TENSION COLLAR :NO.1	090210160010	
10	THREAD TAKE-UP SPRING :NO.2 :0.4MM DIA.	507204010010	
11	TENSION COLLAR :NO.2	090210170010	
12	STRAIGHT PIN :5MM DIA.	09021023@000	
13	STOPPER COLLAR :5MM DIA.	090210180010	
14	ROLLER-TYPE MIDDLE THREAD GUIDE[S]	09021009@S30	
15	STRAIGHT PIN :NO.1 :3MM DIA.	503101150020	
16	THREAD GUIDE COLLAR :1.8MM DIA.	516503010010	
17	FACE COVER :NEEDLE BAR CASE	09051001@060	
17	FACE COVER :NEEDLE BAR CASE :15-NEEDLE	09051001X090	
18	UPPER THREAD LOCK[A]	08027005@A00	
19	BASE :UPPER THREAD LOCK	08027005@000	
20	LOCK SHAFT[S]	080270030S00	
21	COMPRESSION SPRING :0.3MM DIA.	507603040030	
22	UPPER THREAD HOLDER[A]	0B020009@A00	
23	BRACKET :UPPER THREAD HOLDER	0B0200010000	
24	THREAD SUSPENDER DISK	0B0200050000	
25	COMPRESSION SPRING :0.3MM DIA.	507603020010	
26	PRESSER :THREAD SUSPENDER SPRING	0B0200060000	
27	STEPPED SCREW :NO.1 :9/64*7.5	512153040000	
28	BASE :UPPER THREAD HOLDER[S]	0B020009@S00	
29	BASE :UPPER THREAD HOLDER	0B020009@000	
30	VELCRO	0B020007@000	
31	UPPER THREAD HOLDER[S]	0B020018@S00	
32	UPPER THREAD HOLDER	0B020018@000	
33	COLLAR :NO.1 :3MM DIA.	502503070010	
34	E-RING :1.5MM DIA.	611100040000	
35	STEPPED SCREW :NO.1 :9/64*8.8	512153150000	
36	ROUND COUNTERSUNK HEAD SCREW :9/64*3.5	511553010010	
37	HOLDER :STRAIGHT PIN	090210190010	
38	STRAIGHT PIN :3MM DIA.	09021022@000	
39	E-RING :2MM DIA.	611100050000	
40	BASE :CHANGE ROLLER[S]	070110@@@S10	
41	SCREW WITH ROLLER PIN :NO.1 :M5[S]	514105030S20	
42			
43			
44			
45			
46			
47			
48			
49			

Note: As for parts with mark @, please follow our instructions on Table of Contents in your parts order.

(RR01)

UPPER THREAD HOLDER



UPPER THREAD HOLDER

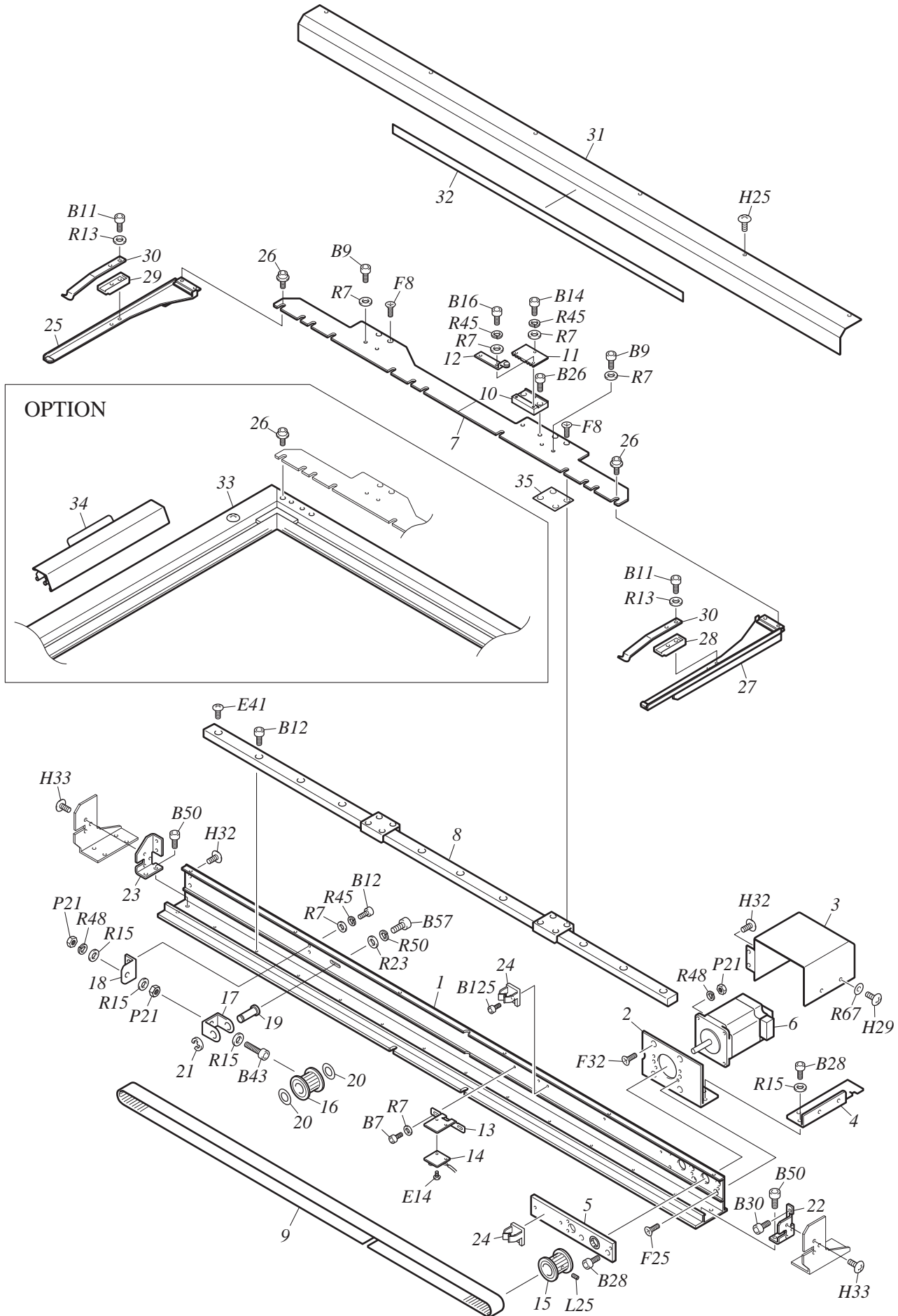
MG-7

No.	Part Name	Part No.	Remark
1	HOOK[S]	0B0110650S10	
2	PULSE MOTOR :42MM SQUARE :DOUBLE-END[T]	0J6110700T00	
3	BASE :HOOK MOTOR	0B0110420000	
4	COLLAR :SPRING GUIDE	502522010010	
5	DAMPER RING :4MM DIA.	080320410000	
6	TORSION SPRING :0.8MM DIA.	507308190010	
7	LEVER :HOOK	0B0110470000	
8	CONNECTING PLATE :HOOK	0B0110080010	
9	SLIDE :HOOK	0B0110510000	
10	WASHER :2.6*7*T0.5	519204010000	
11	GUIDE :HOOK	0B0110520020	
12	STEPPED SCREW :NO.1 :M4*6.7	512104100040	
13	STEPPED SCREW :NO.1 :9/64*10	512153020000	
14	STEPPED SCREW :NO.1 :9/64*7.5	512153040000	
15	SPACER :SLIDE HOOK	0B0110370010	
16			
17			
18			
19			
20			
21			
22			
23			
24			
25			
26			
27			
28			
29			
30			
31			
32			
33			
34			
35			
36			
37			
38			
39			
40			
41			
42			
43			
44			
45			
46			
47			
48			
49			
50			

Note: As for parts with mark @, please follow our instructions on Table of Contents in your parts order.

(RR01)

X-AXIS DRIVE SYSTEM



X-AXIS DRIVE SYSTEM

MG-8

No.	Part Name	Part No.	Remark
1	Z-SPEC. FRAME :0001/520S	0F4110042000	
2	BRACKET :X MOTOR	0F5300370000	
3	COVER :X MOTOR	0F4150170000	
4	STAY :X MOTOR COVER	0F4150180000	
5	BEARING CASE :NO.4 :8MM DIA.[S]	0F4150190S00	
6	PULSE MOTOR :60MM SQUARE :WITH SENSOR[A]	0J6105400A10	
7	FRAME HOLDER	0F4120030030	
8	LINEAR WAY :LWL-15C2R970	660300070000	
9	TIMING BELT :MA5 :W15-299E/LY	623A00020000	
10	BELT CATCHER :NO.1 :X	0F4160480000	
11	BELT CATCHER :NO.2 :X	0F4160490000	
12	SENSOR PLATE :NO.1	0F4140030000	
13	BRACKET :MAGNETIC SENSOR	0F4140020000	
14	CARD :MAGNETIC SENSOR A	0J4204400000	
15	TIMING PULLEY :W15-16	501430140020	
16	TIMING PULLEY :W15-16[S]	501430060S10	
17	HOLDER :TIMING PULLEY	0F4160040000	
18	TENSIONER :X DRIVE BELT	0F4160050010	
19	FLANGE PIN :NO.3	503503030000	
20	RULON WASHER :TW-1020	638400090000	
21	E-RING :7MM DIA.	611100100000	
22	BRACKET :Z-SPEC. FRAME DRIVE BASE :R	0G028012R010	
23	BRACKET :Z-SPEC. FRAME DRIVE BASE :L	0G028012L010	
24	MINI CLAMP :MB-2	644100080000	
25	FRAME HOLDER :L[S]	0G314009LS30	
26	HEXAGON SOCKET HEAD FLANGE SCREW :M5*10	S123051001MZ	
27	FRAME HOLDER :R[S]	0G314009RS30	
28	STOPPER :NO.1	0G314001A020	
29	STOPPER :NO.2	0G314002B020	
30	PLATE SPRING :HOLDER BASE :T1.5	507815060010	
31	COVER :Z-SPEC. FRAME :0001/520S	0F4110130000	
32	TRAVERSE SCALE	0P1200020000	
33	BORDER FRAME :0001/045*520S[A]	309152030A00	
34	BORDER FRAME CLIP :BFF4 :L100-300	0G052015@020	
35	SPACER :NO.2 :T0.3	510200300000	
36			
37			
38			
39			
40			
41			
42			
43			
44			
45			
46			
47			
48			
49			
50			

Note: As for parts with mark @, please follow our instructions on Table of Contents in your parts order.

(QS05)

Y-AXIS DRIVE SYSTEM

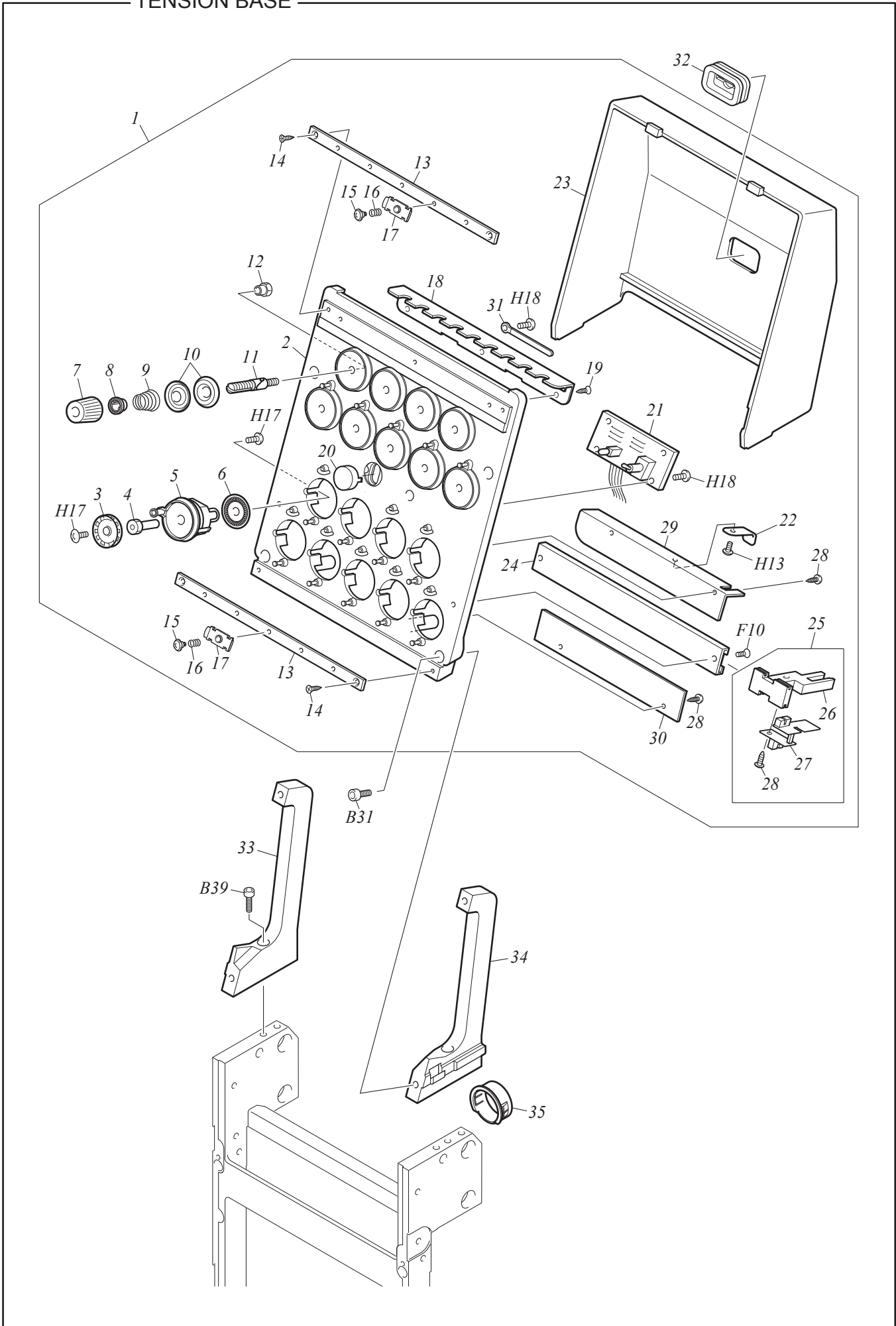
MG-9

No.	Part Name	Part No.	Remark
1	BRACKET :Y-DRIVE BASE	0F4220040000	
2	SENSOR PLATE :NO.1[S]	0F4230370S10	
3	Z-SPEC. FRAME ARM :L	0F423038L000	
4	Z-SPEC. FRAME ARM :R	0F423038R000	
5	DRIVE BASE :NO.7 :L :Y450	16071008L000	
6	DRIVE BASE :NO.7 :R :Y450	16071008R000	
7	BRACKET :Y-DRIVE BASE	030610020000	
8	BELT CATCHER :NO.1 :Y	0F4160070000	
9	HOLDER :TIMING PULLEY	0F4210010010	
10	BELT CATCHER :NO.2 :Y	0F4230160010	
11	SIDE COVER :Y-DRIVE BASE	0F4230220000	
12	BRACKET :ORIGIN SENSOR	0F4230250010	
13	TABLE HOLDER :FRONT L	15212003L000	
14	TABLE HOLDER :FRONT R	15212003R000	
15	TIMING PULLEY :W15-16	501430020020	
16	TIMING PULLEY :W15-16[S]	501430060S10	
17	BEARING COLLAR :12MM DIA.	502712020000	
18	STRAIGHT PIN :NO.4 :10MM DIA.	503104060010	
19	SHAFT :Y-AXIS PULLEY	0F0170110010	
20	E-RING :7MM DIA.	611100100000	
21	TIMING BELT :MA5 :W15-261E/LY	623A00010000	
22	RULON WASHER :TW-1020	638400090000	
23	LINEAR WAY :LWL-15C2R580	660300050000	
24	CARD :MAGNETIC SENSOR A	0J4204400000	
25	BASE :Y MOTOR	0F4240010000	
26	TIMING PULLEY :W19-18	501F18010010	
27	BEARING CASE :NO.3 :15MM DIA.[S]	508315030S00	
28	BRACKET :Y MOTOR	0F4240020000	
29	BEARING COLLAR :12MM DIA.	502712020000	
30	PULSE MOTOR :60MM SQUARE :WITH SENSOR[A]	0J6105400A10	
31	Y SHAFT :12P*924	QS7103010010	
32	TIMING PULLEY :W20-63	501F17010000	
33	TIGHTENING JOINT :12MM DIA.	504312010010	
34	TIMING BELT :3GT :19*270/E	628300010001	
35			
36			
37			
38			
39			
40			
41			
42			
43			
44			
45			
46			
47			
48			
49			
50			

Note: As for parts with mark @, please follow our instructions on Table of Contents in your parts order.

(QS05)

TENSION BASE



TENSION BASE

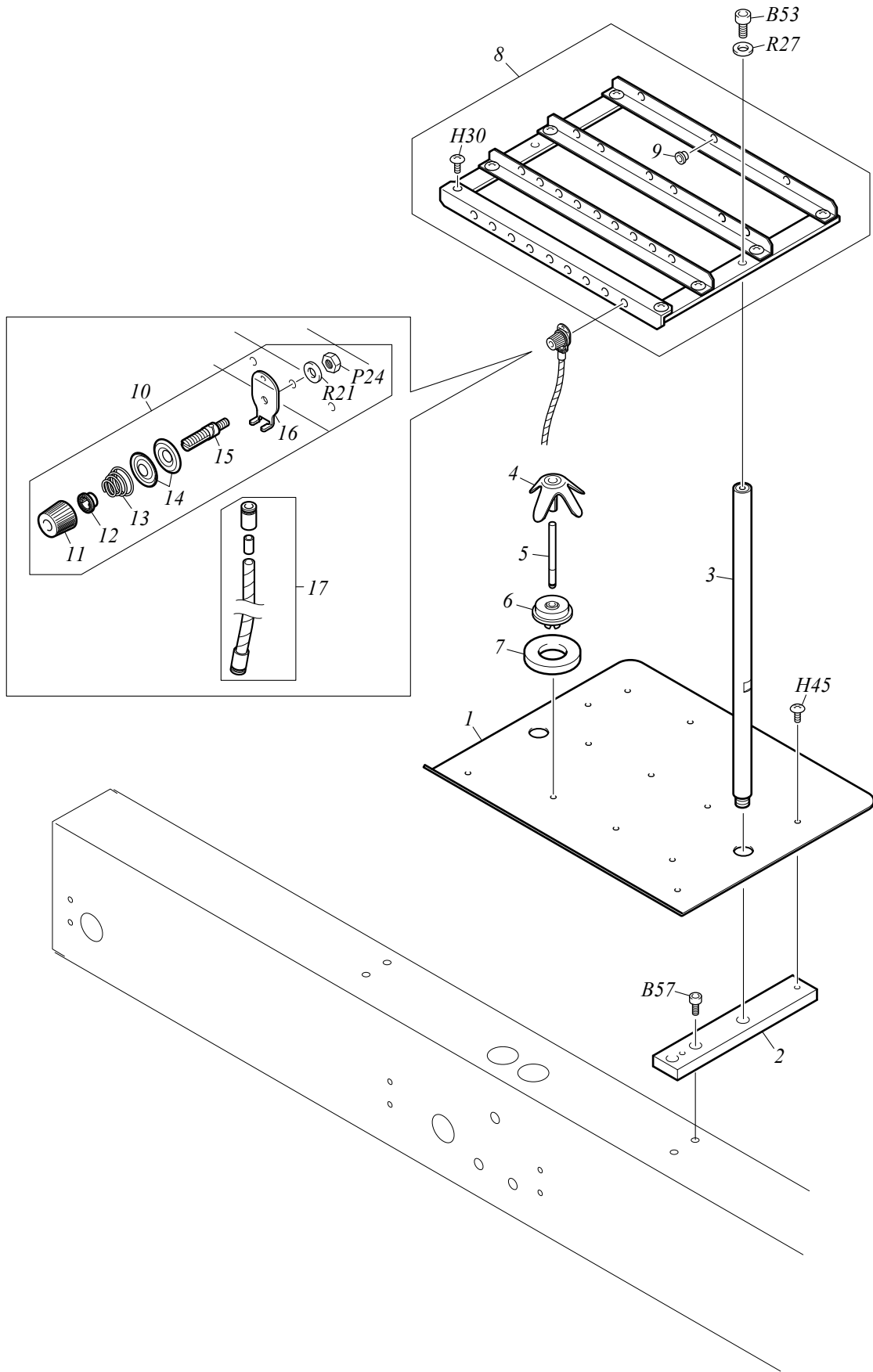
MG-10

No.	Part Name	Part No.	Remark
1	TENSION BASE :ROTARY :TFMX :GUARD B	UC29@0000140	
2	TENSION BASE :ROTARY[S]	0C012002@S60	
3	ROTARY TENSION DISK	0C0230120010	
4	SHAFT :ROTARY TENSION DISK	0C0230130030	
5	BASE :ROTARY TENSION DISK[S]	0C0230190S20	
6	SLIT PLATE :ROTARY DISK :50	0J4203800000	
7	KNOB :THREAD TENSION :A	0C0220150000	
8	SPRING HOOK	0C0220080000	
9	TAPER SPRING :0.6MM DIA.	507706010000	
10	TENSION DISK	0C0210060000	
11	THREAD TENSION STUD :WITH GROOVE	0C0210040000	
12	SCREW BUSHING :NO.2 :M4	509804050000	
13	BASE :THREAD PRESSER	0C022018@010	
14	COUNTERSUNK TAPPING SCREW :3P*10	S550031001SD	
15	TRUSS HEAD SCREW :STEPPED :M3*4*2	S132030401TD	
16	TAPER SPRING :0.2MM DIA.	507702010000	
17	THREAD PRESSER	0C0220030010	
18	UPPER THREAD GUIDE :TENSION BASE	0C022017@020	
19	COUNTERSUNK TAPPING SCREW :3P*8	S550030801SD	
20	LAMP COVER :TENSION BASE	0C0250050000	
21	CARD :TENSION BASE	0J2601900030	
22	PLATE SPRING :T0.3	507803050000	
23	COVER :TENSION BASE	0C015002@000	
24	RAIL :THREAD BREAKAGE SENSOR	0C023014@000	
25	TC SENSOR[A]	0J2602300A20	
26	BRACKET :TC SENSOR CARD	0C0230220010	
27	CARD :TC SENSOR	0J2602100010	
28	TRUSS HEAD TAPPING SCREW :3P*6	S530030601SD	
29	DISK GUARD :A	0C023020@010	
30	DISK GUARD :B	0C023016@000	
31	COATED CLIP :5	644500150000	
32	GROMMET	0C0250090000	
33	BRACKET :TENSION BASE :L[S]	0C024003LS00	
34	BRACKET :TENSION BASE :R[S]	0C024003RS00	
35	BUSHING :HARNES	0J1501100010	
36			
37			
38			
39			
40			
41			
42			
43			
44			
45			
46			
47			
48			
49			
50			

Note: As for parts with mark @, please follow our instructions on Table of Contents in your parts order.

(QS11)

THREAD STAND



THREAD STAND

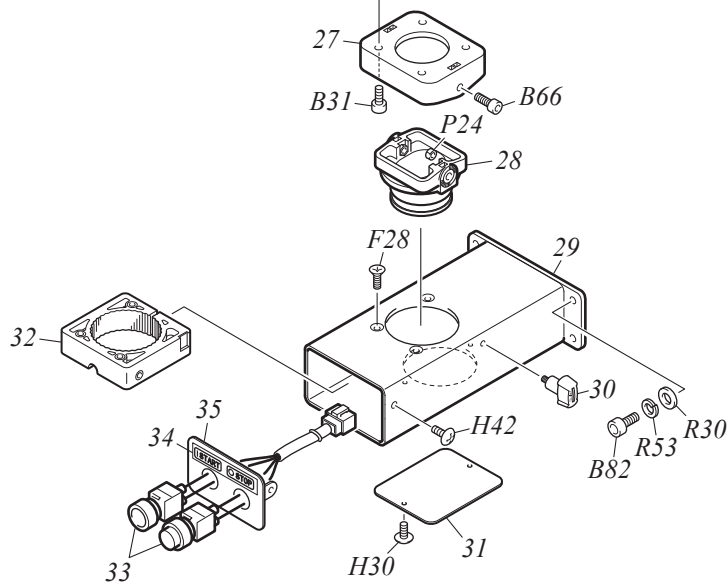
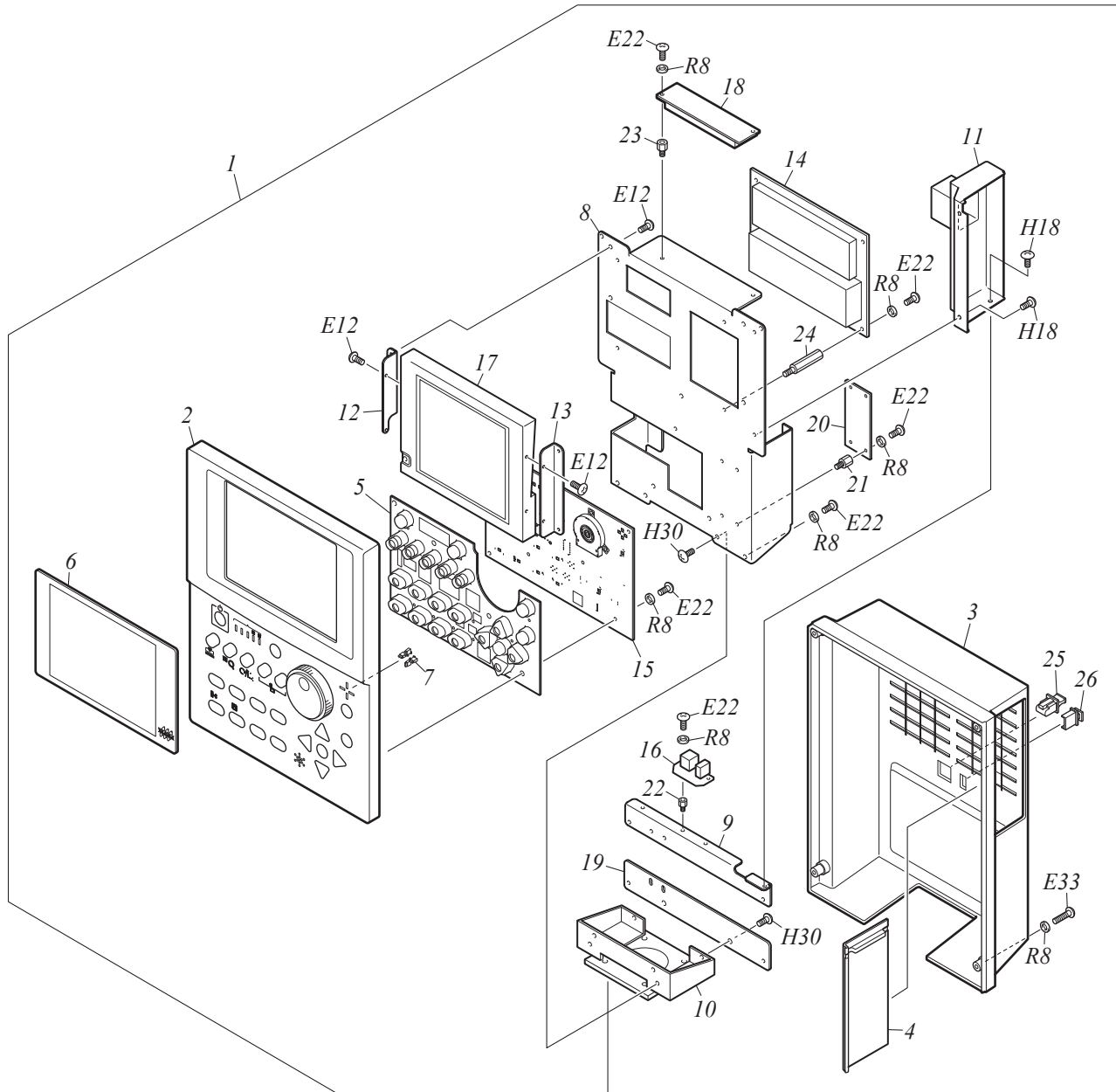
MG-11

No.	Part Name	Part No.	Remark
1	THREAD STAND PLATE	1D810001@010	
2	BASE :THREAD STAND PLATE	0D0110340000	
3	THREAD COURSE SUPPORT BAR :L395	0D0210315010	
4	THREAD STAND BLADE	0D0110010010	
5	THREAD STAND STUD	0D0110410000	
6	BASE :THREAD STAND STUD	0D0110420000	
7	FELT :THREAD STAND PLATE :T10	0D0110022000	
8	THREAD COURSE[A]	1E810001@A10	
9	THREAD GUIDE COLLAR :4.5MM DIA.	51650101@010	
10	THREAD TENSION :TUBE :B	UD1100000200	
11	KNOB :THREAD TENSION :A	0C0220150000	
12	SPRING HOOK	0C0220080000	
13	TAPER SPRING :0.6MM DIA.	507706010000	
14	TENSION DISK	0C0220160010	
15	THREAD TENSION STUD :WITH GROOVE	0C0210040000	
16	THREAD TENSION GUIDE :TUBE	0D0210150030	
17	SPIRAL TUBE :L230[A]	0D0210052A00	
18			
19			
20			
21			
22			
23			
24			
25			
26			
27			
28			
29			
30			
31			
32			
33			
34			
35			
36			
37			
38			
39			
40			
41			
42			
43			
44			
45			
46			
47			
48			
49			
50			

Note: As for parts with mark @, please follow our instructions on Table of Contents in your parts order.

(QS11)

OPERATION PANEL



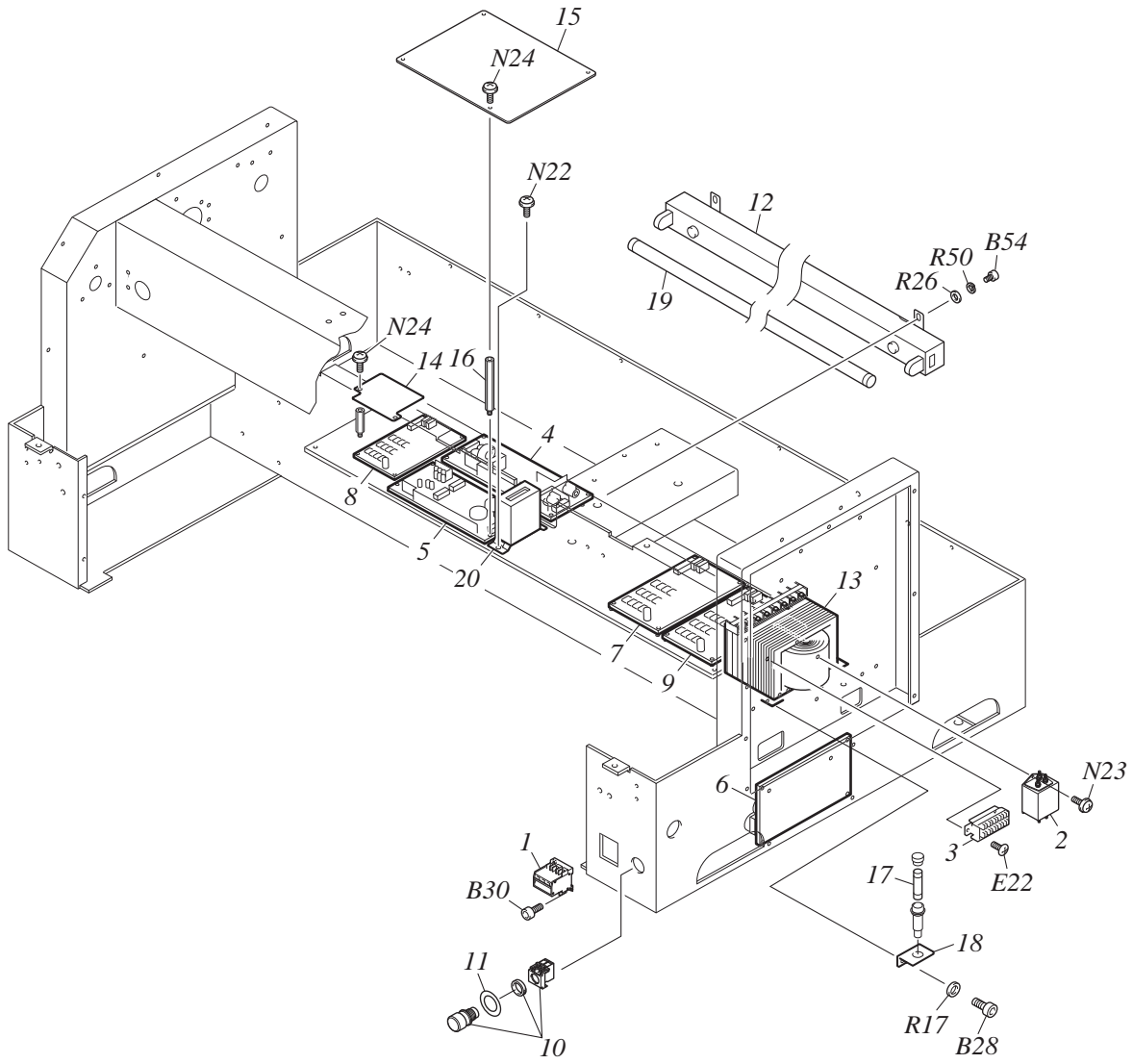
OPERATION PANEL

MG-12

No.	Part Name	Part No.	Remark
1	CONTROLLER :X16-J[A]	0J0204000A10	Japanese
1	CONTROLLER :X16-E[A]	0J0204001A10	English
2	OPERATION PANEL :FRONT[S]	0J1404200S20	
3	OPERATION PANEL :REAR	0J1404300010	
4	SHUTTER :FDD	0J1404400010	
5	OPERATION BUTTON	0J1404500000	
6	COVER :LCD PANEL	0J1404600010	
7	COVER :LAMP	0J1404700000	
8	BASE :CARD	0J1407600000	
9	SUPPORT :CARD BASE	0J1406500020	
10	BASE :OPERATION PANEL[S]	0J1405000S00	
11	COVER :USB	0J1408500000	
12	BRACKET :LCD :L	0J14077L0000	
13	BRACKET :LCD :R	0J14077R0000	
14	CARD :CPU-J :X16[A]	0J2304802A10	Japanese
14	CARD :CPU-E :X16[A]	0J2304803A10	English
15	CARD :SWITCH	0J3502000010	
16	CARD :I/F CONNECTOR	0J3200700010	
17	LCD :6.5 INCH	641200140000	
18	INVERTER :BACKLIGHT	645500160000	
19	SUPPORT :PANEL BASE	0J1406600020	
20	CARD :CAPACITOR	0J3502600010	
21	SPACER :HEXAGON	644500880000	
22	SPACER :HEXAGON	644500300000	
23	SPACER :HEXAGON	644500360000	
24	SPACER :HEXAGON :BSB-320	644500620000	
25	DUST CAP :LAN	644501460000	
26	DUST CAP :USB	644500490000	
27	BASE :CONTROLLER	030220590000	
28	HOLDER :CONTROLLER	030220580000	
29	PIPE :CONTROLLER	030210300010	
30	KNOBBED SCREW :NO.2 :M5*9[S]	511F05080S10	
31	COVER :CONTROLLER	030210310000	
32	CLAMP :CONTROLLER HOLDER[S]	030220870S00	
33	SWITCH :CYLINDER HEAD[A]	0J0603300A10	
34	IO LABEL :START/STOP	0P0600030000	
35	BASE :START SWITCH/STOP SWITCH[S]	030230190S10	
36			
37			
38			
39			
40			
41			
42			
43			
44			
45			
46			
47			
48			

Note: As for parts with mark @, please follow our instructions on Table of Contents in your parts order.

(QS05)



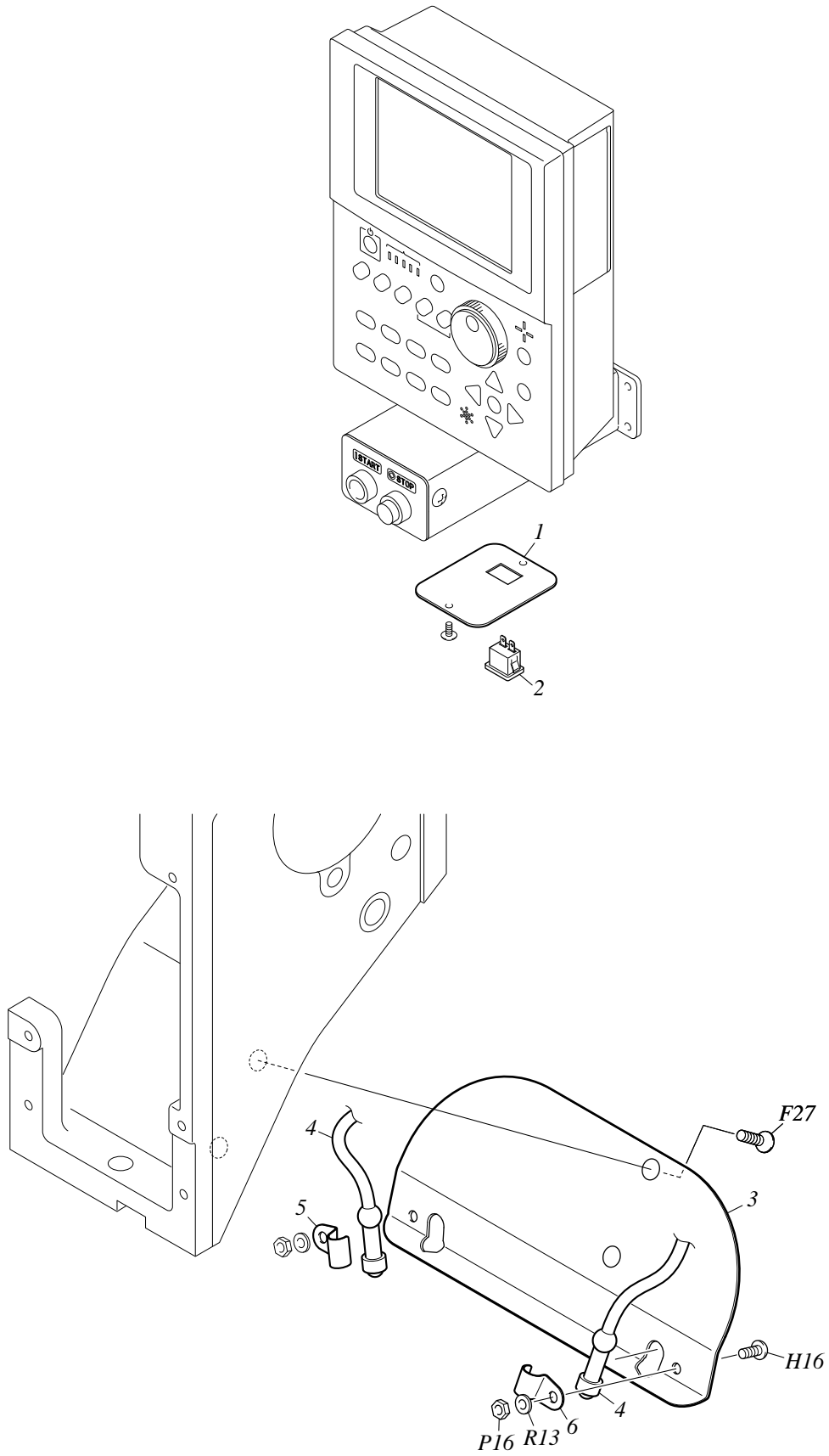
ELECTRICAL PARTS

MG-13

No.	Part Name	Part No.	Remark
1	CIRCUIT PROTECTOR :SINGLE PHASE 10A	646100100010	
2	NOISE FILTER :SINGLE-PHASE	641400140000	
3	TERMINAL BASE :5P	643400050000	
4	DC POWER SUPPLY :24V	645300191011	
5	DC POWER SUPPLY :5V +/-12V	645300030000	
6	CARD :POWER SUPPLY :SINGLE HEAD	0J2101602030	
7	CARD :MACHINE	0J2502301090	
8	DRIVER :X12-F[A]	0J0302500A30	
9	CARD :HEAD	0J27023010A0	
10	SWITCH :EMERGENCY STOP[A]	0J0603000A10	
11	NAME PLATE :EMERGENCY STOP SWITCH	0J5100600000	
12	FLUORESCENT LAMP :1-LAMP 18W :DIRECT MOUNTING[A]	0J0710400A00	Export (Excluding ETL-Spec. and Taiwanese markets)
12	FLUORESCENT LAMP :30W :DIRECT MOUNTING[A]	0J0713600A00	Japanese and Taiwanese markets
13	TRANSFORMER :X12	643100140011	ETL, EN, ENA, GES-Spec.
14	COVER :DRIVER CARD	0J5101000000	
15	COVER :DC POWER SUPPLY	0J5100900000	
16	STUD :NO.1 :M3-70	505103050010	
17	FUSE :250V 10A	642700230000	ETL, EN, ENA, GES-Spec.
18	HOLDER :FUSE	0L2240100000	ETL, EN, ENA, GES-Spec.
19	LAMP :FLUORESCENT LAMP :18W	0J7100400000	
19	LAMP :FLUORESCENT LAMP :30W	0J7100600000	
20	COUNTER :ELECTRO-MAGNETIC	0J4500200010	
21			
22			
23			
24			
25			
26			
27			
28			
29			
30			
31			
32			
33			
34			
35			
36			
37			
38			
39			
40			
41			
42			
43			
44			
45			
46			
47			
48			

Note: As for parts with mark @, please follow our instructions on Table of Contents in your parts order.

(RR01)



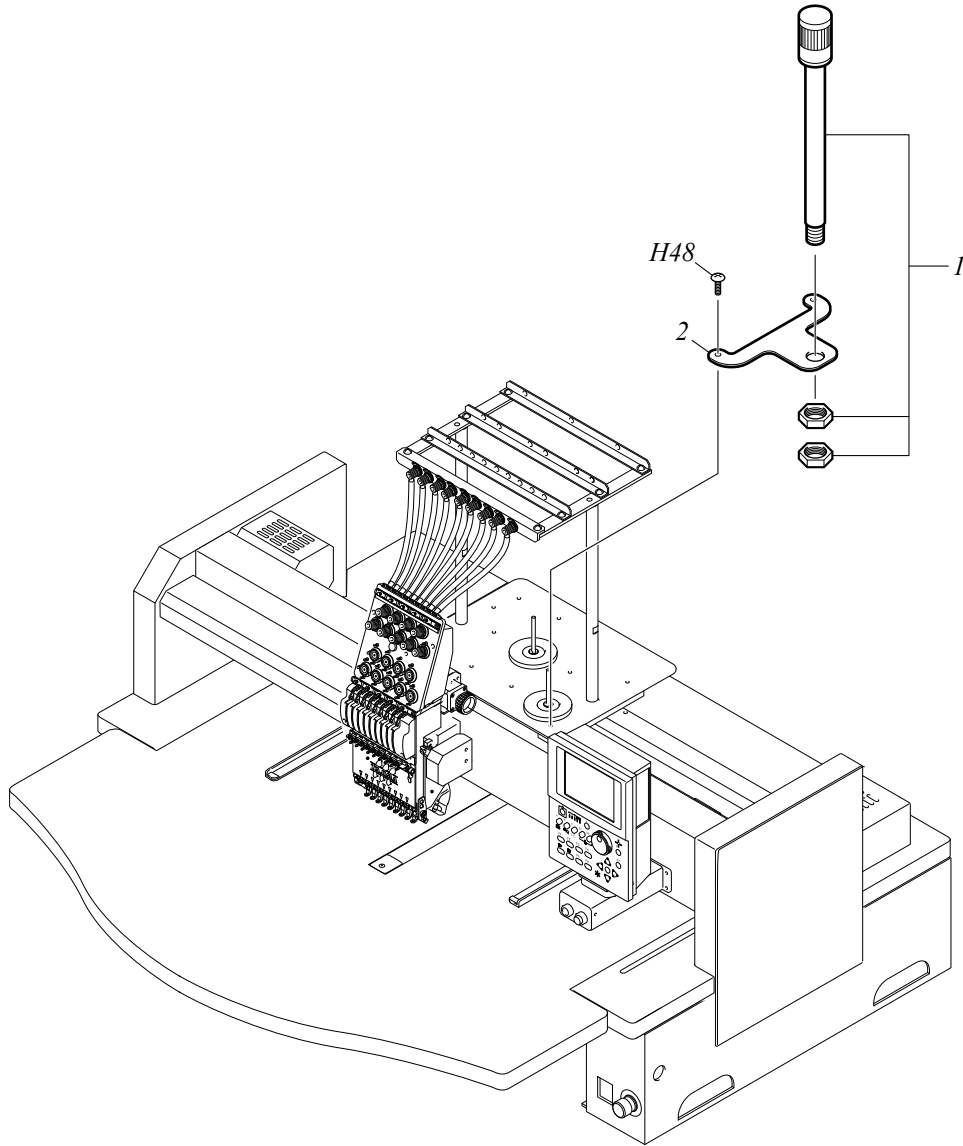
LED LIGHTING

MG-14

No.	Part Name	Part No.	Remark
1	COVER :CONTROLLER :WITH SWITCH	030210510000	
2	SWITCH :SEESAW	642300300000	
3	BRACKET :LED	0L2310020000	
4	LAMP :NEEDLE BASE LED[A]	0J7101700A00	
5	CLAMP :LED :L	0L231003L000	
6	CLAMP :LED :R	0L231003R000	
7			
8			
9			
10			
11			
12			
13			
14			
15			
16			
17			
18			
19			
20			
21			
22			
23			
24			
25			
26			
27			
28			
29			
30			
31			
32			
33			
34			
35			
36			
37			
38			
39			
40			
41			
42			
43			
44			
45			
46			
47			
48			
49			
50			

Note: As for parts with mark @, please follow our instructions on Table of Contents in your parts order.

(RR02)



SIGNAL TOWER (OPTION)

MG-15

No.	Part Name	Part No.	Remark
1	LAMP :SIGNAL TOWER :LED ROTATING LAMP	0J7102000000	
2	BRACKET :SIGNAL TOWER	0L3190050000	
3			
4			
5			
6			
7			
8			
9			
10			
11			
12			
13			
14			
15			
16			
17			
18			
19			
20			
21			
22			
23			
24			
25			
26			
27			
28			
29			
30			
31			
32			
33			
34			
35			
36			
37			
38			
39			
40			
41			
42			
43			
44			
45			
46			
47			
48			
49			
50			

Note: As for parts with mark @, please follow our instructions on Table of Contents in your parts order.

(QS11)

A. B

No.	Part No.	Remark	No.	Part No.	Remark
A Flat Fillister Head Screw			B15	S120031203TD	M3*12
A1	SA41730351CN	1/8*44*3.5	B16	S120031201TN	M3*12
A2	SA41730501CN	1/8*44*5	B17	S120031502TD	M3*15
A3	SA41730551CN	1/8*44*5.5	B18	S120031501TN	M3*15
A4	SA41730601CN	1/8*44*6	B19	S120031601TN	M3*16
A5	SA41740301CN	9/64*40*3	B20	S120031801TN	M3*18
A6	SA41740402CN	9/64*40*4	B21	S120032003TD	M3*20
A7	SA41740401SA	9/64*40*4	B22	S120032001TN	M3*20
A8	SA41740403CL	9/64*40*4	B23	S120032501TN	M3*25
A9	SA41740404CN	9/64*40*4	B24	S120033001TN	M3*30 Half Threads
A10	SA41740501CN	9/64*40*5	B25	S120040501TD	M4*5
A11	SA41740601CN	9/64*40*6	B26	S120040502TN	M4*5
A12	SA41740602CN	9/64*40*6	B27	S120040602TD	M4*6
A13	SA41740701CN	9/64*40*7	B28	S120040601TN	M4*6
A14	SA41740801CN	9/64*40*8	B29	S120040801TD	M4*8
A15	SA41740802CN	9/64*40*8	B30	S120040802TN	M4*8
A16	SA41740803CN	9/64*40*8	B31	S120041001TD	M4*10
A17	SA41741001CN	9/64*40*10	B32	S120041002TN	M4*10
A18	SA41741202CN	9/64*40*12	B33	S120041201TD	M4*12
A19	SA41741501CN	9/64*40*15	B34	S120041202TN	M4*12
A20	SA41750431TN	11/64*40*4.3	B35	S120041401TN	M4*14
A21	SA41750701CN	11/64*40*7	B36	S120041502TD	M4*15
A22	SA41750751CN	11/64*40*7.5	B37	S120041501TN	M4*15
A23	SA41750901SH	11/64*40*9	B38	S120041601TN	M4*16
A24	SA41751151CN	11/64*40*11.5	B39	S120041801TN	M4*18
A25	SA41751201CN	11/64*40*12	B40	S120042002TD	M4*20
A26	S141030801SC	M3*8	B41	S120042001TN	M4*20
A27	S141030802SD	M3*8	B42	S120042502TD	M4*25
A28	S141031001CC	M3*10	B43	S120042501TN	M4*25
A29	S141041001SC	M4*10	B44	S120042504TN	M4*25 Half Threads
			B45	S120043001TN	M4*30
			B46	S120043502TD	M4*35
			B47	S120043501TN	M4*35
			B48	S120044001TN	M4*40
			B49	S120044501TN	M4*45
B Hexagon Socket Head Cap Screw			B50	S120050601TN	M5*6
B1	S120020801TD	M2*8	B51	S120050801TD	M5*8
B2	S120021001TD	M2*10	B52	S120050802TN	M5*8
B3	S120480501TN	M2.6*5	B53	S120051001TD	M5*10
B4	S120030301TN	M3*3	B54	S120051002TN	M5*10
B5	S120030401TN	M3*4	B55	S120051004TP	M5*10
B6	S120030502TD	M3*5	B56	S120051201TD	M5*12
B7	S120030501TN	M3*5	B57	S120051202TN	M5*12
B8	S120030601TD	M3*6	B58	S120051401TN	M5*14
B9	S120030602TN	M3*6	B59	S120051501MZ	M5*15
B10	S120030804MZ	M3*8	B60	S120051502TD	M5*15
B11	S120030801TD	M3*8	B61	S120051503TN	M5*15
B12	S120030802TN	M3*8	B62	S120051601TN	M5*16
B13	S120031001TD	M3*10	B63	S120051801TN	M5*18
B14	S120031002TN	M3*10	B64	S120052001TD	M5*20

B. C

No.	Part No.	Remark	No.	Part No.	Remark
B	Hexagon Socket Head Cap Screw		<i>B114</i>	S120086001TN	M8*60
<i>B65</i>	S120052002TN	M5*20	<i>B115</i>	S120087001TN	M8*70
<i>B66</i>	S120052201TN	M5*22	<i>B116</i>	S120102002TD	M10*20
<i>B67</i>	S120052301TN	M5*23	<i>B117</i>	S120102001TN	M10*20
<i>B68</i>	S120052501TN	M5*25	<i>B118</i>	S120102501TN	M10*25
<i>B69</i>	S120053001TN	M5*30	<i>B119</i>	S120103001TN	M10*30
<i>B70</i>	S120053503TD	M5*35	<i>B120</i>	S120103501TN	M10*35
<i>B71</i>	S120053501TN	M5*35	<i>B121</i>	S120104001TN	M10*40
<i>B72</i>	S120053502TN	M5*35 Half Threads	<i>B122</i>	S120123001TN	M12*30
<i>B73</i>	S120054001TN	M5*40	<i>B123</i>	S120123501TN	M12*35
<i>B74</i>	S120054501TN	M5*45	<i>B124</i>	S120081801TN	M8*18
<i>B75</i>	S120055001TN	M5*50	<i>B125</i>	S120470501TN	M2.5*5
<i>B76</i>	S120055002TN	M5*50 Half Threads	<i>B126</i>	S120052502TD	M5*25
<i>B77</i>	S120055501TN	M5*55	<i>B127</i>	S120030302TD	M3*3
<i>B78</i>	S120056001TN	M5*60	<i>B128</i>	S120051504TN	M5*15 Low Head
<i>B79</i>	S120056003TN	M5*60 Half Threads	<i>B129</i>	S120031801TD	M3*18
<i>B80</i>	S120060801TN	M6*8	<i>B130</i>	S120052801TN	M5*28
<i>B81</i>	S120060901TN	M6*9	<i>B131</i>	S120044502TN	M4*45 Half Threads
<i>B82</i>	S120061001TN	M6*10	<i>B132</i>	S120081501TD	M8*15
<i>B83</i>	S120061202TD	M6*12	<i>B133</i>	S120051802TD	M5*18
<i>B84</i>	S120061201TN	M6*12	<i>B134</i>	S120470401TN	M2.5*4
<i>B85</i>	S120061501TD	M6*15	<i>B135</i>	S120033003SD	M3*30
<i>B86</i>	S120061502TN	M6*15	<i>B136</i>	S120030402TD	M3*4
<i>B87</i>	S120061801TD	M6*18	<i>B137</i>	S120033002TN	M3*30
<i>B88</i>	S120061802TN	M6*18	<i>B138</i>	S120067502TN	M6*75
<i>B89</i>	S120062001TN	M6*20	<i>B139</i>	S120050501TN	M5*5
<i>B90</i>	S120062501TN	M6*25	<i>B140</i>	S120082001TD	M8*20
<i>B91</i>	S120063001TN	M6*30	<i>B141</i>	S120086002TD	M8*60
<i>B92</i>	S120063501TN	M6*35			
<i>B93</i>	S120064001TN	M6*40			
<i>B94</i>	S120064501TN	M6*45			
<i>B95</i>	S120064502TN	M6*45 Half Threads	C	Hexagon Bolt	
<i>B96</i>	S120065001TN	M6*50 Half Threads	<i>C1</i>	S121030601SD	M3*6
<i>B97</i>	S120066501TN	M6*65	<i>C2</i>	S121040801SD	M4*8
<i>B98</i>	S120067501TN	M6*75 Half Threads	<i>C3</i>	S121042501SD	M4*25
<i>B99</i>	S120068001TN	M6*80 Half Threads	<i>C4</i>	S121051001SD	M5*10
<i>B100</i>	S12006A001TN	M6*100	<i>C5</i>	S121051502SC	M5*15
<i>B101</i>	S120081201TN	M8*12	<i>C6</i>	S121051501SD	M5*15
<i>B102</i>	S120081502TN	M8*15	<i>C7</i>	S121052001SD	M5*20
<i>B103</i>	S120081503TP	M8*15	<i>C8</i>	S121061501SC	M6*15
<i>B104</i>	S120081601TN	M8*16	<i>C9</i>	S121062501TN	M6*25
<i>B105</i>	S120082001TN	M8*20	<i>C10</i>	S121064501SD	M6*45
<i>B106</i>	S120082502TN	M8*25	<i>C11</i>	S121065001SC	M6*50
<i>B107</i>	S120083001TN	M8*30	<i>C12</i>	S121065002SD	M6*50
<i>B108</i>	S120083501TN	M8*35	<i>C13</i>	S121065501SD	M6*55
<i>B109</i>	S120084001TN	M8*40	<i>C14</i>	S121066501SD	M6*65
<i>B110</i>	S120084002TN	M8*40 Half Threads	<i>C15</i>	S121067501SC	M6*75
<i>B111</i>	S120084501TN	M8*45	<i>C16</i>	S121081501TN	M8*15
<i>B112</i>	S120084502TN	M8*45 Half Threads	<i>C17</i>	S121081801TN	M8*18
<i>B113</i>	S120085001TN	M8*50	<i>C18</i>	S121103001TN	M10*30

C. D. E

No.	Part No.	Remark	No.	Part No.	Remark
C Hexagon Bolt			E7	S160470402MZ	M2.5*4
C19	S121103502SC	M10*35	E8	S160470501MZ	M2.5*5
C20	S121103501TN	M10*35	E9	S160470801MZ	M2.5*8
C21	S121104001SC	M10*40	E10	S160471301MZ	M2.5*13
C22	S121125001TN	M12*50	E11	S160471302SD	M2.5*13
C23	S12112B001TN	M12*110	E12	S160480601SD	M2.6*6
C24	S121082501TN	M8*25	E13	S160030301MZ	M3*3
C25	S121102501TN	M10*25	E14	S160030302SD	M3*3
C26	S121082202TN	M8*22	E15	S160030403CD	M3*4
C27	S121041001SD	M4*10	E16	S160030401MZ	M3*4
C28	S121040601SD	M4*6	E17	S160030402SD	M3*4
			E18	S160030501MZ	M3*5
			E19	S160030502SD	M3*5
			E20	S160030601MZ	M3*6
			E21	S160030603SA	M3*6
			E22	S160030602SD	M3*6
D Round Fillister Head Screw			E23	S160030801MZ	M3*8
D1	SA43740401CL	9/64*40*4	E24	S160030803SA	M3*8
D2	SA43740501CL	9/64*40*5	E25	S160030802SD	M3*8
D3	SA43740502CN	9/64*40*5	E26	S160031001MZ	M3*10
D4	SA43740503CN	9/64*40*5	E27	S160031003SC	M3*10 Half Threads
D5	SA43740504CN	9/64*40*5	E28	S160031002SD	M3*10
D6	SA43740601CL	9/64*40*6	E29	S160031101SC	M3*11 Half Threads
D7	SA43740602CN	9/64*40*6	E30	S160031201MZ	M3*12
D8	SA43740603CL	9/64*40*6	E31	S160031202SD	M3*12
D9	SA43740604CN	9/64*40*6	E32	S160031401SA	M3*14
D10	SA43740682CN	9/64*40*6.8	E33	S160031402SD	M3*14
D11	SA43740801CL	9/64*40*8	E34	S160031501SD	M3*15
D12	SA43740802CN	9/64*40*8	E35	S160031601SD	M3*16
D13	SA43741001CN	9/64*40*10	E36	S160031801SD	M3*18
D14	SA43741201CN	9/64*40*12	E37	S160032001SD	M3*20
D15	SA43750601CN	11/64*40*6	E38	S160033001SD	M3*30
D16	SA43750652CN	11/64*40*6.5	E39	S160034001SD	M3*40 Half Threads
D17	SA43751051CN	11/64*40*10.5	E40	S160035001SD	M3*50 Half Threads
D18	SA43751201CN	11/64*40*12	E41	S160040401SD	M4*4
D19	SA43751501CN	11/64*40*15	E42	S160040501SD	M4*5
D20	SA43812451CN	9/32*28*24.5	E43	S160040601MZ	M4*6
D21	S143030501SD	M3*5	E44	S160040602SD	M4*6
			E45	S160040801SD	M4*8
			E46	S160041001SD	M4*10
			E47	S160041201SD	M4*12
			E48	S160041501SD	M4*15
			E49	S160041801SD	M4*18
E Pan Head Screw			E50	S160043001SD	M4*30
E1	S160410141MZ	M1.4*1.4	E51	S160045001SD	M4*50
E2	S160020202MZ	M2*2	E52	S160046001SD	M4*60
E3	S160020301MZ	M2*3	E53	S160050601SD	M5*6
E4	S160020401MZ	M2*4	E54	S160050701SD	M5*7
E5	S160020801MZ	M2*8	E55	S160050801SD	M5*8
E6	S160470301MZ	M2.5*3	E56	S160051002MZ	M5*10

E. F. G. H

No.	Part No.	Remark	No.	Part No.	Remark
E Pan Head Screw			F27	S150040802SD	M4*8
E57	S160051001SD	M5*10	F28	S150041001MZ	M4*10
E58	S160051201SD	M5*12	F29	S150041002SD	M4*10
E59	S160053001SD	M5*12	F30	S150041201SD	M4*12
E60	S160051501SD	M5*15	F31	S150041401SD	M4*14
E61	S160054501SD	M5*45	F32	S150041501SD	M4*15
E62	S160055001SD	M5*50	F33	S150042001SD	M4*20
E63	S160056001SD	M5*60	F34	S150042201SD	M4*22
E64	S160047001SD	M4*70	F35	S150042501SD	M4*25
E65	S160480801SD	M2.6*8	F36	S150050601SD	M5*6
E66	S160030504SC	M3*5	F37	S150050801SD	M5*8
E67	S160480602MZ	M2.6*6	F38	S150051001MZ	M5*10
E68	S160031403MZ	M3*14	F39	S150051002SD	M5*10
E69	S160042001SD	M4*20	F40	S150051201SD	M5*12
E70	S160044501SD	M4*45	F41	S150051501SD	M5*15
E71	S160020203SD	M2*2	F42	S150053001SD	M5*30
E72	S160470502SD	M2.5*5	F43	S150053501SD	M5*35
E73	SA60740551TN	9/64*40*5.5	F44	S150054001SD	M5*40
E74	S160431001MZ	M1.7*10	F45	S150061502SC	M6*15
			F46	S150061503SD	M6*15
			F47	S150063501SD	M6*35
			F48	S150081201SD	M8*12
			F49	S150087001TN	M8*70
F Countersunk Head Screw					
F1	SA51741001CN	9/64*40*10			
F2	SA50750801CN	11/64*40*8			
F3	S150020601SD	M2*6			
F4	S150030401MZ	M3*4			
F5	S150030402SD	M3*4	G Round Countersunk Head Screw		
F6	S150030501MZ	M3*5	G1	SA53730601CL	1/8*44*6
F7	S150030502SD	M3*5	G2	SA53740301CL	9/64*40*3
F8	S151030601SD	M3*6	G3	SA53740351CL	9/64*40*3.5
F9	S150030601MZ	M3*6	G4	SA53740401CL	9/64*40*4
F10	S150030602SD	M3*6	G5	SA53740601CL	9/64*40*6
F11	S150030701SD	M3*7	G6	SA53740701CL	9/64*40*7
F12	S151030801SD	M3*8	G7	SA53740951CL	9/64*40*9.5
F13	S150030801MZ	M3*8	G8	SA53741201CL	9/64*40*12
F14	S150030804SC	M3*8	G9	SA53740681CL	9/64*40*6.8
F15	S150030802SD	M3*8			
F16	S150030803SN	M3*8			
F17	S150031002MZ	M3*10			
F18	S150031001SD	M3*10			
F19	S150031201MZ	M3*12			
F20	S150031202SD	M3*12	H Truss Head Screw		
F21	S150031501MZ	M3*15	H1	SA30730701CL	1/8*44*7
F22	S150031601SD	M3*16	H2	SA30740301CL	9/64*40*3.5
F23	S150040501SD	M4*5	H3	SA30740401CL	9/64*40*4
F24	S150040602MZ	M4*6	H4	SA31740401CM	9/64*40*4
F25	S150040601SD	M4*6	H5	SA30740601CL	9/64*40*6
F26	S150040801MZ	M4*8	H6	SA30740801CL	9/64*40*8

H. J. K

No.	Part No.	Remark	No.	Part No.	Remark
H	Truss Head Screw		H56	S130060801SD	M6*8
H7	S130470301MZ	M2.5*3	H57	S130061001SD	M6*10
H8	S130470302SD	M2.5*3	H58	S130062201SD	M6*22
H9	S130470401MZ	M2.5*4	H59	S130062501SD	M6*25
H10	S130470402SA	M2.5*4	H60	S130063501SD	M6*35
H11	S130470403SD	M2.5*4	H61	S130064001SD	M6*40
H12	S130030301MZ	M3*3	H62	S130031501SD	M3*15
H13	S130030302SD	M3*3	H63	S130043501SD	M4*35
H14	S130030402SD	M3*4	H64	S130020201SD	M2*2
H15	S130030501MZ	M3*5	H65	S130470501SD	M2.5*5
H16	S130030502SD	M3*5	H66	S130052002MZ	M5*20
H17	S130030601MZ	M3*6	H67	S130054501SE	M5*45
H18	S130030602SD	M3*6	H68	S130050502MZ	M5*5
H19	S130030603SA	M3*6	H69	S130054001SD	M5*40
H20	S130030802SD	M3*8	H70	S130055001SD	M5*50
H21	S130030803SA	M3*8			
H22	S130031001MZ	M3*10			
H23	S130031002SD	M3*10			
H24	S130032001SD	M3*20			
H25	S130040401MZ	M4*4			
H26	S130040402SD	M4*4	J Round Head Screw		
H27	S130040501MZ	M4*5	J1	S162020301MZ	M2*3
H28	S130040502SD	M4*5	J2	S162030801SD	M3*8
H29	S130040601MZ	M4*6	J3	S162030802SE	M3*8
H30	S130040602SD	M4*6	J4	S162031001MZ	M3*10
H31	S130040651SD	M4*6.5			
H32	S130040801MZ	M4*8			
H33	S130040802SD	M4*8			
H34	S130040803MZ	M4*8 JIS			
H35	S130041002MZ	M4*10			
H36	S130041001SD	M4*10	K Slotted Set Screw		
H37	S130041201SD	M4*12	K1	SA71730351CN	1/8*44*3.5
H38	S130041502SD	M4*15	K2	SA71740601CN	9/64*40*6
H39	S130042001SD	M4*20	K3	SA71750251CN	11/64*40*2.5
H40	S130050501SD	M5*5	K4	SA71750351CN	11/64*40*3.5
H41	S130050602MZ	M5*6	K5	SA71750401CN	11/64*40*4
H42	S130050601SD	M5*6	K6	SA71750501CN	11/64*40*5
H43	S130050651SD	M5*6.5	K7	SA71790501CN	15/64*28*5
H44	S130050701SD	M5*7	K8	SA71791001CN	15/64*28*10
H45	S130050801MZ	M5*8	K9	SA71791501CN	15/64*28*15
H46	S130050802SD	M5*8	K10	SA71791701CN	15/64*28*17
H47	S130051002MZ	M5*10	K11	SA71800401CN	1/4*40*4
H48	S130051001SD	M5*10	K12	SA71800451CN	1/4*40*4.5
H49	S130051201MZ	M5*12	K13	SA71800501CN	1/4*40*5
H50	S130051202SD	M5*12	K14	SA71800601CN	1/4*40*6
H51	S130051501SD	M5*15	K15	SA71800801CN	1/4*40*8
H52	S130052001SD	M5*20	K16	SA71811201CN	9/32*28*12
H53	S130052502SD	M5*25	K17	S171050601TN	M5*6
H54	S130053001SD	M5*30	K18	S171030601SD	M3*6
H55	S130053501SD	M5*35			

L. M. N

No.	Part No.	Remark	No.	Part No.	Remark
L	Hexagon Socket Head Set Screw		M	Hexagon Socket Head Button Screw	
L1	SA70730251CN	1/8*44*2.5	M1	S124030401SC	M3*4
L2	SA70730301CN	1/8*44*3	M2	S124040601SC	M4*6
L3	SA70750901CN	11/64*28*9	M3	S124040802SC	M4*8
L4	SA70750401CN	11/64*40*4	M4	S124040803SD	M4*8
L5	SA70750601CN	11/64*40*6	M5	S124051001SC	M5*10
L6	SA70750801CN	11/64*40*8	M6	S124051002SD	M5*10
L7	SA70790401CN	15/64*28*4	M7	S124051501SD	M5*15
L8	SA70790901CN	15/64*28*9	M8	S124081201SC	M8*12
L9	S170470301TN	M2.5*3	M9	S124081202SD	M8*12
L10	S170030201TN	M3*2	M10	S124081501SD	M8*15
L11	S170030301TN	M3*3	M11	S124030501SC	M3*5
L12	S170030401TN	M3*4	M12	S124030801SC	M3*8
L13	S170030501TN	M3*5	M13	S124030502TC	M3*5
L14	S170030601TN	M3*6	M14	S124030402SD	M3*4
L15	S170030801TN	M3*8	M15	S124030601SD	M3*6
L16	S170040301TN	M4*3	M16	S124040401SD	M4*4
L17	S170040401TN	M4*4	M17	S124030602SC	M3*6
L18	S170040501TN	M4*5			
L19	S170040601TN	M4*6			
L20	S170040602TN	M4*6 Half Threads	N	Screw with Washer	
L21	S170040801TN	M4*8	N1	S660480601SE	M2.6*6
L22	S170041001TN	M4*10	N2	S660030601SE	M3*6
L23	S170041201TN	M4*12	N3	S660030801SE	M3*8
L24	S170050401TN	M5*4	N4	S660031001SE	M3*10
L25	S170050501TN	M5*5	N5	S660031501SE	M3*15
L26	S170050601TN	M5*6	N6	S660031601SE	M3*16
L27	S170050801TN	M5*8	N7	S660031801SE	M3*18
L28	S170051001TN	M5*10	N8	S660040601SE	M4*6
L29	S170051201TN	M5*12	N9	S660040801SE	M4*8
L30	S170051501TN	M5*15	N10	S660041001SE	M4*10
L31	S170060501TN	M6*5	N11	S660041201SE	M4*12
L32	S170060601TN	M6*6	N12	S660045501SE	M4*55
L33	S170060801TN	M6*8	N13	S660051001SE	M5*10
L34	S170061001TN	M6*10	N14	S660051201SE	M5*12
L35	S170061801TN	M6*18	N15	S660051401SE	M5*14
L36	S170080801TN	M8*8	N16	S660051801SE	M5*18
L37	S170081001TN	M8*10	N17	S660030801MZ	M3*8
L38	S170081501TN	M8*15	N18	S660030502MZ	M3*5
L39	S170031001TN	M3*10	N19	S660031502MZ	M3*15
L40	S170031201TN	M3*12	N20	S660030603S1	M3*6 (P-4)
L41	S170053001TN	M5*30	N21	S660030802S1	M3*8 (P-3)
L42	S170061201TN	M6*12	N22	S660030604S1	M3*6 (P-3)
L43	S174060601TN	M6*6B	N23	S660031802S1	M3*18 (P-3)
L44	S170050802TN	M5*8 Narrow Treading	N24	S660040602S1	M4*6 (P-3)
			N25	S660040802S1	M4*8 (P-3)
			N26	S660041002S1	M4*10 (P-3)
			N27	S660043001S1	M4*30 (P-3)
			N28	S660051002S1	M5*10 (P-3)
			N29	S660031803S1	M3*18 (P-4)

P. R

No.	Part No.	Remark	No.	Part No.	Remark
P	Nut		P50	S212470001SC	M2.5 Type 3
P1	SB10730601CN	1/8*44*6*3	P51	SB12750701SC	11/64*7*2.2 Type 3
P2	SB10740601CL	9/64*40*6*2	P52	S211040001SD	M4 Type 2
P3	SB10740602CN	9/64*40*6*3	P53	SB12740601MZ	9/64*6*2 Type 3
P4	SB10750602CN	11/64*40*6*2	P54	SB10750601CN	11/64*6*2.2
P5	SB10750603CN	11/64*40*6*3	P55	S212030003SD	M3 Type 3
P6	SB10750701CN	11/64*40*7*3	P56	S217060001SD	M6 Cap
P7	SB11750701CN	11/64*40*7*3	P57	S217030001SD	M3 Cap
P8	S210420001XA	M1.6 Type 1	P58	S212200001SC	M20 Type 3
P9	S210020001SD	M2 Type 1			
P10	S212020002SD	M2 Type 3			
P11	S210460002SD	M2.3 Type 1			
P12	S210470001MZ	M2.5 Type 1			
P13	S212480001SD	M2.6 Type 3	R Washer		
P14	S210030001MZ	M3 Type 1	R1	S301410301MZ	Plain M1.4*3*t0.3
P15	S210030002SC	M3 Type 1	R2	S301020351XZ	Plain M2*3.5*t0.5
P16	S210030003SD	M3 Type 1	R3	S301020431SD	Plain M2*4.3*t0.3
P17	S215030001SD	M3 Thumbscrew Type 2	R4	S301480501XB	Plain M2.6*5*t0.5
P18	S212030001SC	M3 Type 3	R5	S301480751XB	Plain M2.6*7.5*t0.5
P19	S212030002SD	M3 Type 3	R6	S301030602XZ	Plain M3*6*t0.3
P20	S212530001SC	M3.5 Type 3	R7	S301030603SC	Plain M3*6*t0.5
P21	S210040001SC	M4 Type 1	R8	S301030601SD	Plain M3*6*t0.5
P22	S210040002SD	M4 Type 1	R9	S301030701SD	Plain M3*7*t0.5
P23	S212040001SC	M4 Type 3	R10	S301030804SD	Plain M3*8*t0.3
P24	S212040002SD	M4 Type 3	R11	S301030805MZ	Plain M3*8*t0.5
P25	S217040001SD	M4 Cap	R12	S301030801SC	Plain M3*8*t0.5
P26	S210050001SC	M5 Type 1	R13	S301030802SD	Plain M3*8*t0.5
P27	S210050002SD	M5 Type 1	R14	S301030803SD	Plain M3*8*t1
P28	S212050001SC	M5 Type 3	R15	S301040805SC	Plain M4*8*t0.5
P29	S212050002SD	M5 Type 3	R16	S301040802SD	Plain M4*8*t0.5
P30	S217050001SD	M5 Cap	R17	S301040804SC	Plain M4*8*t0.8
P31	S210060001SC	M6 Type 1	R18	S301040803SD	Plain M4*8*t0.8
P32	S210060002SC	M6 Type 1 (Left)	R19	S301041004MZ	Plain M4*10*t0.8
P33	S210060003SD	M6 Type 1	R20	S301041002SC	Plain M4*10*t0.8
P34	S210060004SD	M6 Type 1 (Left)	R21	S301041003SD	Plain M4*10*t0.8
P35	S212060001SC	M6 Type 3	R22	S301041201SC	Plain M4*12*t1
P36	S210080001SC	M8 Type 1	R23	S301051002SC	Plain M5*10*t0.8
P37	S210080002SD	M8 Type 1	R24	S301051003SD	Plain M5*10*t0.8
P38	S212080001SC	M8 Type 3	R25	S301051204MZ	Plain M5*12*t0.8
P39	S212080002SD	M8 Type 3	R26	S301051202SC	Plain M5*12*t0.8
P40	S210100001SC	M10 Type 1	R27	S301051203SD	Plain M5*12*t0.8
P41	S213100002SD	M10 With Flange	R28	S301061102SC	Plain M6*11*t1.6
P42	S213100003SD	M10 With Disk Spring	R29	S301061151SC	Plain M6*11.5*t0.8
P43	S210120001SC	M12 Type 1	R30	S301061301SC	Plain M6*13*t1.0
P44	S212120001SC	M12 Type 3	R31	S301061302SD	Plain M6*13*t1.0
P45	S212120002SD	M12 Type 3	R32	S301061601SC	Plain M6*16*t1.0
P46	S210160001SD	M16 Type 1	R33	S301081601SD	Plain M8*16*t1.2
P47	S212160002SC	M16 Type 1	R34	S301081801SC	Plain M8*18*t1.6
P48	S212160001SD	M16 Type 3	R35	S301081802SD	Plain M8*18*t1.6
P49	S210200001SC	M20 Type 1	R36	S301081803SC	Plain M8*18*t3.2

1st Edition January, 2005

4th Edition May, 2013

■ **Manufactured by:**

Tokai Industrial Sewing Machine Co., Ltd.

NO.1800, Ushiyama-cho, Kasugai, Aichi-pref., 486-0901, Japan
Telephone:568-33-1161 Fax:568-33-1191

■ **Distributed by:**

Tajima Industries Ltd.

19-22, Shirakabe, 3-chome, Higashi-ku, Nagoya, 461-0011, Japan
Telephone:52-932-3444 Fax:52-932-2457

●Copy, reprint, or reform of a part or whole of this manual without permission is prohibited.

THE TAJIMA GROUP

<http://www.tajima.com>

Tajima Industries Ltd.

19-22, Shirakabe, 3-chome, Higashi-ku, Nagoya, 461-0011, JAPAN
TEL.81-52-932-3811 FAX.81-52-932-3815

Tokai Industrial Sewing Machine Co.,Ltd.

NO.1800, Ushiyama-cho, Kasugai, Aichi-pref., 486-0901, JAPAN
TEL.81-568-33-1161 FAX.81-568-33-1191